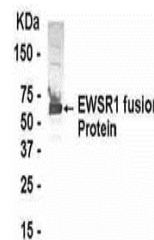


Product Datasheet

EWSR1 Antibody (orb1254026)

| | |
|----------------------------|--|
| Description | EWSR1 Antibody |
| Species/Host | Gallus |
| Reactivity | Human, Mouse, Rat |
| Conjugation | Unconjugated |
| Tested Applications | WB |
| Immunogen | 380-448 |
| Target | EWSR1 |
| Preservatives | Phosphate-Buffered Saline. No preservatives added. |
| Form/Appearance | Liquid |
| Concentration | 1 mg/mL |
| Storage | EWSR1 antibody can be stored at 4°C for short term (weeks). Long term storage should be at -20°C. As with all antibodies care should be taken to avoid repeated freeze thaw cycles. Antibodies should not be exposed to prolonged high temperatures. |
| Note | For research use only |
| Application notes | EWSR1 protein antibody can be used for the detection of EWSR1 protein by Western Blot. |
| Clonality | Polyclonal |
| MW | 37.6 kDa (calculated) |
| Uniprot ID | Q01844 |
| NCBI | NP_005234.1 |
| Dilution Range | EWSR1 protein antibody can be used for the detection of EWSR1 protein by Western Blot. |
| Expiration Date | 12 months from date of receipt. |



E coli-derived fusion protein as test an...