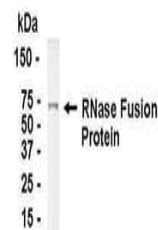


Product Datasheet

RNASE1 Antibody (orb1253851)

Description	RNASE1 Antibody
Species/Host	Gallus
Reactivity	Human
Conjugation	Unconjugated
Tested Applications	WB
Immunogen	1-156
Target	RNASE1
Preservatives	Phosphate-Buffered Saline. No preservatives added.
Form/Appearance	Liquid
Concentration	1 mg/mL
Storage	RNASE1 antibody can be stored at 4°C for short term (weeks). Long term storage should be at -20°C. As with all antibodies care should be taken to avoid repeated freeze thaw cycles. Antibodies should not be exposed to prolonged high temperatures.
Note	For research use only
Application notes	Ribonuclease pancreatic antibody can be used for the detection of Ribonuclease pancreatic by Western Blot.
Clonality	Polyclonal
MW	17.6 kDa (calculated)
Uniprot ID	P07998
NCBI	NP_002924.1
Dilution Range	Ribonuclease pancreatic antibody can be used for the detection of Ribonuclease pancreatic by Western Blot.
Expiration Date	12 months from date of receipt.



E coli-
derived
fusion
protein as
test an...