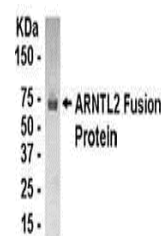


## Product Datasheet

### ARNTL2 Antibody (orb1253846)

<b>Description</b>	ARNTL2 Antibody
<b>Species/Host</b>	Gallus
<b>Reactivity</b>	Human
<b>Conjugation</b>	Unconjugated
<b>Tested Applications</b>	WB
<b>Immunogen</b>	8-100
<b>Target</b>	ARNTL2
<b>Preservatives</b>	Phosphate-Buffered Saline. No preservatives added.
<b>Form/Appearance</b>	Liquid
<b>Concentration</b>	1 mg/mL
<b>Storage</b>	CLIF antibody can be stored at 4°C for short term (weeks). Long term storage should be at -20°C. As with all antibodies care should be taken to avoid repeated freeze thaw cycles. Antibodies should not be exposed to prolonged high temperatures.
<b>Note</b>	For research use only
<b>Application notes</b>	Cycle-like factor CLIF antibody can be used for the detection of Cycle-like factor CLIF by Western Blot.
<b>Clonality</b>	Polyclonal
<b>MW</b>	67.2 kDa (calculated)
<b>Uniprot ID</b>	<b>Q8WYA1</b>
<b>NCBI</b>	<b>NP_064568.1</b>
<b>Dilution Range</b>	Cycle-like factor CLIF antibody can be used for the detection of Cycle-like factor CLIF by Western Blot.
<b>Expiration Date</b>	12 months from date of receipt.



E coli-  
derived  
fusion  
protein as  
test an...