

Product Datasheet

ESR2 Antibody (orb1252769)

Description

ESR2 Antibody

Species/Host

Mouse

Reactivity

Equine, Human, Monkey, Mouse, Porcine, Rat, Sheep

Conjugation

Unconjugated

Tested

FC, IF, IHC, WB

Applications

Immunogen

The C-terminus fragment of recombinant human Estrogen Receptor beta protein was used as the immunogen for this antibody.

Target

ESR2

Preservatives

PBS with 0.1 mg/ml rAlbumin and 0.05% sodium azide

Form/Appearance

Liquid

Concentration

0.2 mg/mL

Storage

Aliquot and Store at 2-8°C. Avoid freeze-thaw cycles.

Note

For research use only

Application notes

Flow Cytometry: 0.5-1ug/10e6 cellsIF: 1-2 ug/mlWB: 0.5-1 ug/mlIHC (FFPE): 0.5-1 ug/ml for 30 minutes at RT (1)The concentration stated for each application is a general starting point. Variations in protocols, secondaries and substrates may require the Estrogen Receptor beta antibody to be titrated up or down for optimal performance.1. Staining of formalin-fixed tissues requires boiling tissue sections in 10mM citrate buffer, pH 6.0, for 10-20 min followed by cooling at RT for 20 minutes.2. The prediluted format is supplied in a dropper bottle and is optimized for use in IHC. After epitope retrieval step (if required), drip mAb solution onto the tissue section and incubate at RT for 30 min.

Isotype

IgG2a

Clonality

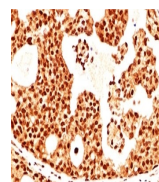
Monoclonal

Uniprot ID

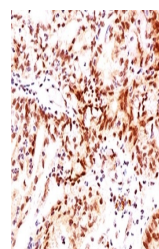
[Q92731](#)

Dilution Range

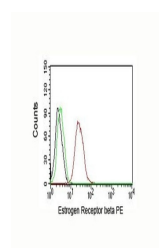
Flow Cytometry: 0.5-1ug/10e6 cellsIF: 1-2 ug/mlWB: 0.5-1 ug/mlIHC (FFPE): 0.5-1 ug/ml for 30 minutes at RT (1)The concentration stated for each application is a general starting point. Variations in protocols, secondaries and substrates may require the Estrogen Receptor beta antibody to be titrated up or down for optimal performance.1. Staining of formalin-fixed tissues requires boiling tissue sections in 10mM citrate buffer, pH 6.0, for 10-20 min followed by cooling at RT for 20 minutes.2. The



IHC testing of breast cancer stained with...



IHC testing of ovarian cancer stained with...



FACS testing of MCF-7 cells: Black = control, red = ESR2 antibody.