

## Product Datasheet

### HSPD1 Antibody (orb1252759)

## Description

HSPD1 Antibody

### Species/Host

Mouse

### Reactivity

Bovine, Canine, Drosophila, Frog, Gallus, Hamster, Human, Monkey, Mouse, Porcine, Rabbit, Rat, Sheep

### Conjugation

Unconjugated

### Tested Applications

FC, IF, IHC, WB

### Immunogen

Recombinant human HSP60 was used as the immunogen for this antibody.

### Target

HSPD1

### Preservatives

PBS with 0.1 mg/ml rAlbumin and 0.05% sodium azide

### Form/Appearance

Liquid

### Concentration

0.2 mg/mL

### Storage

Aliquot and Store at 2-8°C. Avoid freeze-thaw cycles.

### Note

For research use only

### Application notes

Flow Cytometry: 0.5-1 ug/million cells  
IF: 0.5-1 ug/ml  
WB: 0.25-0.5 ug/ml  
IHC (FFPE): 0.5-1 ug/ml for 30 minutes at RT  
(1) Prediluted format : incubate for 30 min at RT  
(2) The concentration stated for each application is a general starting point. Variations in protocols, secondaries and substrates may require the antibody to be titrated up or down for optimal performance.  
1. Staining of formalin-fixed tissues is enhanced by boiling tissue sections in 10mM Citrate Buffer, pH 6.0, for 10-20 min followed by cooling at RT for 20 minutes.  
2. The prediluted format is supplied in a dropper bottle and is optimized for use in IHC. After epitope retrieval step (if required), drip mAb solution onto the tissue section and incubate at RT for 30 min.

### Isotype

IgG1, kappa

### Clonality

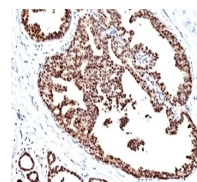
Monoclonal

### Uniprot ID

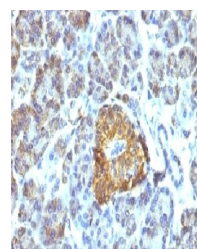
**P10809**

### Dilution Range

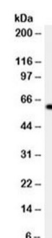
Flow Cytometry: 0.5-1 ug/million cells  
IF: 0.5-1 ug/ml  
WB: 0.25-0.5 ug/ml  
IHC (FFPE): 0.5-1 ug/ml for 30 minutes at RT  
(1) Prediluted format : incubate for 30 min at RT  
(2) The concentration stated for each application is a general starting point. Variations in protocols, secondaries and substrates may require the antibody to be titrated up or down for optimal performance.  
1. Staining of formalin-fixed tissues is enhanced by boiling



Formalin/paraffin human breast carcinoma...



IHC testing of FFPE pancreas tissue with...



Western blot testing of HeLa cell lysate...