

Product Datasheet

KRT14 Antibody (orb1252735)

Description

KRT14 Antibody

Species/Host

Mouse

Reactivity

Human, Mouse, Rat

Conjugation

Unconjugated

Tested

FC, IF, IHC, WB

Applications
Immunogen

A synthetic peptide of 15 amino acid from the C-terminus of human Cytokeratin 14 was used as the immunogen.

Target

KRT14

Preservatives

PBS with 0.1 mg/ml rAlbumin and 0.05% sodium azide

Form/Appearance

Liquid

Concentration

0.2 mg/mL

Storage

Aliquot and Store at 2-8°C. Avoid freeze-thaw cycles.

Note

For research use only

Application notes

Western blot: 0.5-1 ug/ml
Flow Cytometry: 0.5-1 ug/million cells
IF: 1-2 ug/ml
IHC (FFPE): 1-2 ug/ml for 30 min at RT
(1) Prediluted format : incubate for 30 min at RT
(2) The concentration stated for each application is a general starting point. Variations in protocols, secondaries and substrates may require the antibody to be titrated up or down for optimal performance.
1. Staining of formalin-fixed tissues requires boiling tissue sections in 10mM Citrate Buffer, pH 6.0, for 10-20 min followed by cooling at RT for 20 minutes.
2. The prediluted format is supplied in a dropper bottle and is optimized for use in IHC. After epitope retrieval step (if required), drip mAb solution onto the tissue section and incubate at RT for 30 min.

Isotype

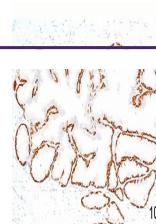
IgG3

Clonality

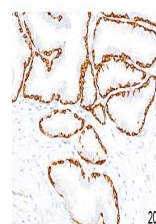
Monoclonal

Uniprot ID
P02533
Dilution Range

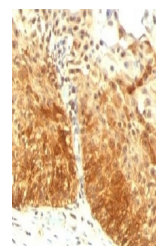
Western blot: 0.5-1 ug/ml
Flow Cytometry: 0.5-1 ug/million cells
IF: 1-2 ug/ml
IHC (FFPE): 1-2 ug/ml for 30 min at RT
(1) Prediluted format : incubate for 30 min at RT
(2) The concentration stated for each application is a general starting point. Variations in protocols, secondaries and substrates may require the antibody to be titrated up or down for optimal performance.
1. Staining of formalin-fixed tissues requires boiling tissue sections in 10mM Citrate Buffer, pH 6.0, for 10-20 min followed by cooling at RT for 20 minutes.
2. The prediluted format is supplied



IHC testing of human prostate (10X) stai...



IHC testing of human prostate (20X) stai...



IHC testing of FFPE human prostate with ...