

Product Datasheet

NKX2-2 Antibody (orb1252724)

Description

NKX2-2 Antibody

Species/Host

Mouse

Reactivity

Gallus, Human, Mouse, Rat

Conjugation

Unconjugated

Tested

FC, IF, IHC

Applications

Immunogen

Human NKX2.2 recombinant protein was used as the immunogen for this antibody.

Target

NKX2-2

Preservatives

PBS with 0.1 mg/ml rAlbumin and 0.05% sodium azide

Form/Appearance

Liquid

Concentration

0.2 mg/mL

Storage

Aliquot and Store at 2-8°C. Avoid freeze-thaw cycles.

Note

For research use only

Application notes

Flow Cytometry: 0.5-1 ug/million cells
IF: 1-2 ug/ml
IHC (FFPE): 0.5-1 ug/ml for 30 minutes at RT (1)
Prediluted format : incubate for 30 min at RT (2)
The concentration stated for each application is a general starting point. Variations in protocols, secondaries and substrates may require the NKX2.2 antibody to be titrated up or down for optimal performance.
1. Staining of formalin-fixed tissues requires boiling tissue sections in 10mM citrate buffer, pH 6.0, for 10-20 min followed by cooling at RT for 20 minutes.
2. The prediluted format is supplied in a dropper bottle and is optimized for use in IHC. After epitope retrieval step (if required), drip mAb solution onto the tissue section and incubate at RT for 30 min.

Isotype

IgG2b, kappa

Clonality

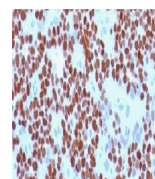
Monoclonal

Uniprot ID

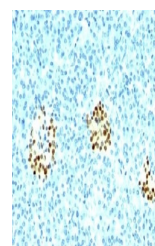
095096

Dilution Range

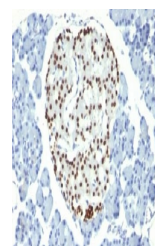
Flow Cytometry: 0.5-1 ug/million cells
IF: 1-2 ug/ml
IHC (FFPE): 0.5-1 ug/ml for 30 minutes at RT (1)
Prediluted format : incubate for 30 min at RT (2)
The concentration stated for each application is a general starting point. Variations in protocols, secondaries and substrates may require the NKX2.2 antibody to be titrated up or down for optimal performance.
1. Staining of formalin-fixed tissues requires boiling tissue sections in 10mM citrate buffer, pH 6.0, for 10-20 min followed by cooling at RT for 20 minutes.
2. The prediluted format is supplied in a dropper



IHC testing of Ewing's sarcoma stained with NKX2-2 antibody.



IHC testing of human pancreas stained with NKX2-2 antibody.



IHC testing of FFPE rat pancreas with NKX2-2 antibody.