

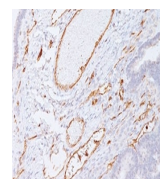
## Product Datasheet

### PECAM1 Antibody (orb1252720)

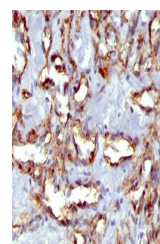
## Description

PECAM1 Antibody

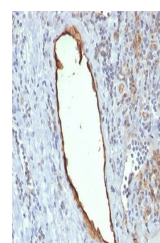
<b>Species/Host</b>	Mouse
<b>Reactivity</b>	Human, Primate, Rabbit
<b>Conjugation</b>	Unconjugated
<b>Tested Applications</b>	FC, IF, IHC, WB
<b>Immunogen</b>	Human recombinant PECAM-1 / CD31 protein was used as the immunogen for this antibody.
<b>Target</b>	PECAM1
<b>Preservatives</b>	PBS with 0.1 mg/ml rAlbumin and 0.05% sodium azide
<b>Form/Appearance</b>	Liquid
<b>Concentration</b>	0.2 mg/mL
<b>Storage</b>	Aliquot and Store at 2-8°C. Avoid freeze-thaw cycles.
<b>Note</b>	For research use only
<b>Application notes</b>	Flow Cytometry: 0.5-1ug/10e6 cellsIF: 1-2 ug/mlWB: 0.5-1 ug/mlIHC (FFPE): 0.5-1 ug/ml for 30 minutes at RT (1)Prediluted format : incubate for 30 min at RT (2)The concentration stated for each application is a general starting point. Variations in protocols, secondaries and substrates may require the PECAM-1 antibody to be titrated up or down for optimal performance.1. Staining of formalin-fixed tissues requires boiling tissue sections in 1mM EDTA, pH 7.5-8.5, for 10-20 min followed by cooling at RT for 20 minutes.2. The prediluted format is supplied in a dropper bottle and is optimized for use in IHC. After epitope retrieval step (if required), drip mAb solution onto the tissue section and incubate at RT for 30 min.
<b>Isotype</b>	IgG1, kappa
<b>Clonality</b>	Monoclonal
<b>Uniprot ID</b>	<b>P16284</b>
<b>Dilution Range</b>	Flow Cytometry: 0.5-1ug/10e6 cellsIF: 1-2 ug/mlWB: 0.5-1 ug/mlIHC (FFPE): 0.5-1 ug/ml for 30 minutes at RT (1)Prediluted format : incubate for 30 min at RT (2)The concentration stated for each application is a general starting point. Variations in protocols, secondaries and substrates may require the PECAM-1 antibody to be titrated up or down for optimal performance.1. Staining of formalin-fixed tissues requires boiling tissue sections in 1mM EDTA, pH 7.5-8.5, for 10-20 min followed by cooling at RT for 20 minutes.2. The prediluted format is supplied



IHC staining of colon carcinoma with PEC...



IHC staining of angiosarcoma with PECAM- ...



IHC staining of tonsil tissue with PECAM...