

Product Datasheet

BrdU Antibody [BRD494] (orb1252670)

Description

BrdU Antibody [BRD494]

Species/Host

Mouse

Reactivity

All

Conjugation

Unconjugated

Tested

FC, IF, IHC

Applications
Immunogen

BrdU / Bromodeoxyuridine conjugated to KLH was used as the immunogen for this antibody.

Preservatives

PBS with 0.1 mg/ml rAlbumin and 0.05% sodium azide

Form/Appearance

Liquid

Concentration

0.2 mg/mL

Storage

Aliquot and Store at 2-8°C. Avoid freez-thaw cycles.

Note

For research use only

Application notes

Flow Cytometry: 0.5-1 ug/million cells
IF: 0.5-1 ug/ml
IHC (FFPE): 0.5-1 ug/ml for 30 minutes at RT
(1) Prediluted format : incubate for 30 min at RT
(2) The concentration stated for each application is a general starting point. Variations in protocols, secondaries and substrates may require the Bromodeoxyuridine / BrdU antibody to be titrated up or down for optimal performance.
1. For staining of formalin-fixed tissues, incubate sections in 4N HCl for 30 minutes at RT followed by digestion with trypsin at 1mg/ml PBS, 10 min at 37°C.
2. The prediluted format is supplied in a dropper bottle and is optimized for use in IHC. After epitope retrieval step (if required), drip mAb solution onto the tissue section and incubate at RT for 30 min.

Isotype

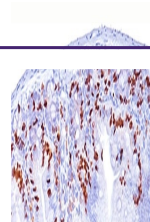
IgG1

Clonality

Monoclonal

Dilution Range

Flow Cytometry: 0.5-1 ug/million cells
IF: 0.5-1 ug/ml
IHC (FFPE): 0.5-1 ug/ml for 30 minutes at RT
(1) Prediluted format : incubate for 30 min at RT
(2) The concentration stated for each application is a general starting point. Variations in protocols, secondaries and substrates may require the Bromodeoxyuridine / BrdU antibody to be titrated up or down for optimal performance.
1. For staining of formalin-fixed tissues, incubate sections in 4N HCl for 30 minutes at RT followed by digestion with trypsin at 1mg/ml PBS, 10 min at 37°C.
2. The prediluted format is supplied in a dropper bottle and is optimized for use in IHC. After epitope retrieval step (if required), drip mAb solution onto the tissue section and



IHC staining of mouse intestine tissue (...)