

Product Datasheet

Multi Cytokeratin 4/5/6/8/10/13/18 Antibody [C11] (orb1252667)

Description

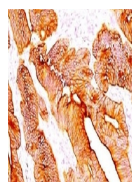
Multi Cytokeratin 4/5/6/8/10/13/18 Antibody [C11]


Species/Host

Mouse

Reactivity

Bovine, Frog, Goat, Guinea pig, Human, Marmoset, Mouse, Porcine, Rat


Conjugation

Unconjugated

Tested

FC, IF, IHC, WB

Applications

IHC testing
of FFPE
human
colon
carcinom...

Immunogen

A keratin-enriched preparation from cultured human A431 was used as the immunogen for this Multi Cytokeratin antibody.

Preservatives

PBS with 0.1 mg/ml rAlbumin and 0.05% sodium azide

Form/Appearance

Liquid

Concentration

0.2 mg/mL

Storage

Aliquot and Store at 2-8°C. Avoid freeze-thaw cycles.

Note

For research use only

Application notes

Flow Cytometry: use the Multi Cytokeratin mAb at 0.5-1 ug/million cells
IF: 0.5-1 ug/ml
WB: 0.5-1 ug/ml
IHC (FFPE): 0.5-1 ug/ml for 30 min at RT
(1) Prediluted format : incubate for 30 min at RT
(2) The concentration stated for each application is a general starting point. Variations in protocols, secondaries and substrates may require the Multi Cytokeratin antibody to be titrated up or down for optimal performance.
1. Staining of formalin-fixed tissues requires boiling tissue sections in 10mM citrate buffer, pH 6.0, for 10-20 min followed by cooling at RT for 20 minutes.
2. The prediluted format is supplied in a dropper bottle and is optimized for use in IHC. After epitope retrieval step (if required), drip mAb solution onto the tissue section and incubate at RT for 30 min.

Isotype

IgG1

Clonality

Monoclonal

Dilution Range

Flow Cytometry: use the Multi Cytokeratin mAb at 0.5-1 ug/million cells
IF: 0.5-1 ug/ml
WB: 0.5-1 ug/ml
IHC (FFPE): 0.5-1 ug/ml for 30 min at RT
(1) Prediluted format : incubate for 30 min at RT
(2) The concentration stated for each application is a general starting point. Variations in protocols, secondaries and substrates may require the Multi