

Product Datasheet

Granulocyte Marker Antibody [BM-2] (orb1252661)

Description

Granulocyte Marker Antibody [BM-2]

Species/Host

Mouse

Reactivity

Human, Primate

Conjugation

Unconjugated

Tested

FC, IF, IHC, WB

Applications

Immunogen

Nuclei from pokeweed mitogen stimulated human peripheral blood lymphocytes were used as the immunogen for this Granulocyte Marker antibody.

Preservatives

PBS with 0.1 mg/ml rAlbumin and 0.05% sodium azide

Form/Appearance

Liquid

Concentration

0.2 mg/mL

Storage

Aliquot and Store at 2-8°C. Avoid freeze-thaw cycles.

Note

For research use only

Application notes

Flow Cytometry: 0.5-1 ug/million cells
IF: 1-2 ug/ml
IHC (FFPE): 0.5-1 ug/ml for 30 minutes at RT
(1) Prediluted format : incubate for 30 min at RT
(2) The concentration stated for each application is a general starting point. Variations in protocols, secondaries and substrates may require the Granulocyte Marker antibody to be titrated up or down for optimal performance.
1. No special pretreatment is required for staining of formalin/paraffin tissues.
2. The prediluted format is supplied in a dropper bottle and is optimized for use in IHC. After epitope retrieval step (if required), drip mAb solution onto the tissue section and incubate at RT for 30 min.

Isotype

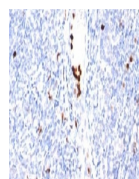
IgG1

Clonality

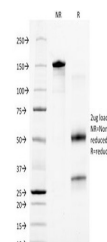
Monoclonal

Dilution Range

Flow Cytometry: 0.5-1 ug/million cells
IF: 1-2 ug/ml
IHC (FFPE): 0.5-1 ug/ml for 30 minutes at RT
(1) Prediluted format : incubate for 30 min at RT
(2) The concentration stated for each application is a general starting point. Variations in protocols, secondaries and substrates may require the Granulocyte Marker antibody to be titrated up or down for optimal performance.
1. No special pretreatment is required for staining of formalin/paraffin tissues.
2. The prediluted format is supplied in a dropper bottle and is optimized for



IHC staining of tonsil tissue with Granu...



SDS-PAGE Analysis of Purified, BSA-Free ...