

Product Datasheet

TYRP1 Antibody (orb1252454)

Description

TYRP1 Antibody

Species/Host

Mouse

Reactivity

Human, Mouse

Conjugation

Unconjugated

Tested

FC, IF, IHC-P

Applications

Immunogen

Recombinant full-length human protein was used as the immunogen for the TYRP1 antibody.

Target

TYRP1

Preservatives

PBS with 0.1 mg/ml rAlbumin and 0.05% sodium azide

Form/Appearance

Liquid

Concentration

0.2 mg/mL

Storage

Aliquot and Store at 2-8°C. Avoid freeze-thaw cycles.

Note

For research use only

Application notes

Flow Cytometry: 1-2 ug/million cells in 0.1ml
Immunofluorescence: 3-6 ug/ml
Immunohistochemistry (FFPE): 3-6 ug/ml for 30 min at RT (1) Prediluted format: incubate for 30 min at RT (2) Optimal dilution of the TYRP1 antibody should be determined by the researcher.1. Staining of formalin-fixed tissues requires boiling tissue sections in 10mM Tris with 1mM EDTA, pH 9.0, for 10-20 min followed by cooling at RT for 20 min.2. The prediluted format is supplied in a dropper bottle and is optimized for use in IHC. After epitope retrieval step (if required), drip mAb solution onto the tissue section and incubate at RT for 30 min.

Isotype

IgG2a, kappa

Clonality

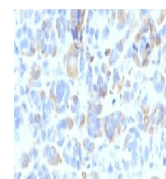
Monoclonal

Uniprot ID

P17643

Dilution Range

Flow Cytometry: 1-2 ug/million cells in 0.1ml
Immunofluorescence: 3-6 ug/ml
Immunohistochemistry (FFPE): 3-6 ug/ml for 30 min at RT (1) Prediluted format: incubate for 30 min at RT (2) Optimal dilution of the TYRP1 antibody should be determined by the researcher.1. Staining of formalin-fixed tissues requires boiling tissue sections in 10mM Tris with 1mM EDTA, pH 9.0, for 10-20 min followed by cooling at RT for 20 min.2. The prediluted format is supplied in a dropper bottle and is optimized for use in IHC. After epitope retrieval step (if required), drip mAb solution onto the tissue section and incubate at RT for



Formalin-fixed,
paraffin-embedded
human ...