

Product Datasheet

GPC3 Antibody (orb1252114)

Description

GPC3 Antibody

Species/Host

Mouse

Reactivity

Human, Rat

Conjugation

Unconjugated

Tested

IF, IHC-P

Applications

Immunogen

Recombinant full-length human GPC3 protein was used as the immunogen for the Glypican-3 antibody.

Target

GPC3

Preservatives

PBS with 0.1 mg/ml rAlbumin and 0.05% sodium azide

Form/Appearance

Liquid

Concentration

0.2 mg/mL

Storage

Aliquot and Store at 2-8°C. Avoid freeze-thaw cycles.

Note

For research use only

Application notes

Immunofluorescence: 0.5-1 ug/ml
Immunohistochemistry (FFPE): 0.5-1 ug/ml for 30 min at RT (1) Prediluted format : incubate for 30 min at RT (2) Optimal dilution of the Glypican-3 antibody should be determined by the researcher.
1. Staining of formalin-fixed tissues requires boiling tissue sections in 10mM Tris with 1mM EDTA, pH 9.0, for 10-20 min followed by cooling at RT for 20 min.
2. The prediluted format is supplied in a dropper bottle and is optimized for use in IHC. After epitope retrieval step (if required), drip mAb solution onto the tissue section and incubate at RT for 30 min.

Isotype

IgG1, kappa

Clonality

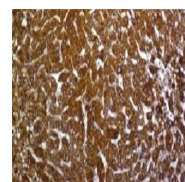
Monoclonal

Uniprot ID

P51654

Dilution Range

Immunofluorescence: 0.5-1 ug/ml
Immunohistochemistry (FFPE): 0.5-1 ug/ml for 30 min at RT (1) Prediluted format : incubate for 30 min at RT (2) Optimal dilution of the Glypican-3 antibody should be determined by the researcher.
1. Staining of formalin-fixed tissues requires boiling tissue sections in 10mM Tris with 1mM EDTA, pH 9.0, for 10-20 min followed by cooling at RT for 20 min.
2. The prediluted format is supplied in a dropper bottle and is optimized for use in IHC. After epitope retrieval step (if required), drip mAb solution onto the tissue section and incubate at RT for 30 min.



IHC testing of
FFPE human
hepatocellular...



IHC testing of
FFPE rat lung
with Glypic...