

Product Datasheet

IGKC Antibody (orb1252092)

Description

IGKC Antibody

Species/Host

Mouse

Reactivity

Human

Conjugation

Unconjugated

Tested

FC, IHC, WB

Applications

Immunogen

Human Kappa light chain was used as the immunogen for this Kappa antibody.

Target

IGKC

Preservatives

PBS with 0.1 mg/ml rAlbumin and 0.05% sodium azide

Form/Appearance

Liquid

Concentration

0.2 mg/mL

Storage

Aliquot and Store at 2-8°C. Avoid freeze-thaw cycles.

Note

For research use only

Application notes

Flow Cytometry: 0.5-1 ug/million cellsWB: 1:250-1:500IHC (FFPE): 0.5-1.0 ug/ml for 30 min at RT (1)Prediluted format : incubate for 30 min at RT (2)The concentration stated for each application is a general starting point. Variations in protocols, secondaries and substrates may require the Kappa antibody to be titrated up or down for optimal performance.1. Staining of formalin-fixed tissues requires boiling tissue sections in 10mM Citrate Buffer, pH 6.0, for 10-20 min followed by cooling at RT for 20 minutes.2. The prediluted format is supplied in a dropper bottle and is optimized for use in IHC. After epitope retrieval step (if required), drip mAb solution onto the tissue section and incubate at RT for 30 min.

Isotype

IgG1, kappa

Clonality

Monoclonal

Uniprot ID

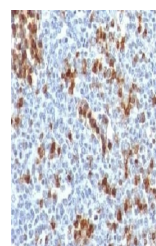
P01601, P01834

Dilution Range

Flow Cytometry: 0.5-1 ug/million cellsWB: 1:250-1:500IHC (FFPE): 0.5-1.0 ug/ml for 30 min at RT (1)Prediluted format : incubate for 30 min at RT (2)The concentration stated for each application is a general starting point. Variations in protocols, secondaries and substrates may require the Kappa antibody to be titrated up or down for optimal performance.1. Staining of formalin-fixed tissues requires boiling tissue sections in 10mM Citrate Buffer, pH 6.0, for 10-20 min followed by cooling at RT for 20 minutes.2. The prediluted format is supplied in a dropper bottle and is



Western blot analysis of human spleen ti...



IHC testing of FFPE human tonsil and Kap...