

## Product Datasheet

### Granulocyte Antibody [SPM250] (orb1251847)

**Description**

Granulocyte Antibody [SPM250]

**Species/Host**

Mouse

**Reactivity**

Human, Primate

**Conjugation**

Unconjugated

**Tested**

FC, IF, IHC

**Applications**
**Immunogen**

Nuclei from pokeweed mitogen stimulated human peripheral blood lymphocytes were used as the immunogen for this Granulocyte antibody.

**Preservatives**

PBS with 0.1 mg/ml rAlbumin and 0.05% sodium azide

**Form/Appearance**

Liquid

**Concentration**

0.2 mg/mL

**Storage**

Aliquot and Store at 2-8°C. Avoid freez-thaw cycles.

**Note**

For research use only

**Application notes**

Flow Cytometry: 0.5-1 ug/million cells in 0.1ml  
Immunofluorescence: 1-2 ug/ml  
Immunohistochemistry (FFPE): 0.5-1 ug/ml for 30 minutes at RT (1)  
Prediluted format: incubate for 30 min at RT (2)  
The optimal dilution of the Granulocyte antibody for each application should be determined by the researcher.  
1. Staining of formalin-fixed tissues requires boiling tissue sections in 10mM citrate buffer, pH 6.0, for 10-20 min followed by cooling at RT for 20 minutes.  
2. The prediluted format is supplied in a dropper bottle and is optimized for use in IHC. After epitope retrieval step (if required), drip mAb solution onto the tissue section and incubate at RT for 30 min.

**Isotype**

IgG1

**Clonality**

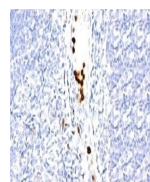
Monoclonal

**Uniprot ID**

NotKnown

**Dilution Range**

Flow Cytometry: 0.5-1 ug/million cells in 0.1ml  
Immunofluorescence: 1-2 ug/ml  
Immunohistochemistry (FFPE): 0.5-1 ug/ml for 30 minutes at RT (1)  
Prediluted format: incubate for 30 min at RT (2)  
The optimal dilution of the Granulocyte antibody for each application should be determined by the researcher.  
1. Staining of formalin-fixed tissues requires boiling tissue sections in 10mM citrate buffer, pH 6.0, for 10-20 min followed by cooling at RT for 20 minutes.  
2. The prediluted format is supplied in a dropper bottle and is optimized for use in IHC. After



Formalin-fixed, paraffin-embedded human ...