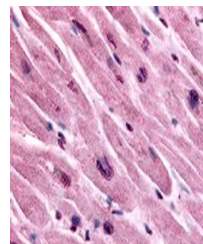


Product Datasheet

CHRM3 Antibody (orb1250541)

Description	CHRM3 Antibody
Species/Host	Rabbit
Reactivity	Gorilla, Human, Monkey, Primate
Conjugation	Unconjugated
Tested Applications	ELISA, IHC
Immunogen	CHRM3 antibody was raised against a peptide located in the 3rd cytoplasmic domain of CHRM3 (Human).
Target	CHRM3
Preservatives	PBS, 0.1% sodium azide.
Form/Appearance	Liquid
Concentration	1 mg/ml
Storage	CHRM3 antibody should be stored long term (months) at -80 °C and short term (days) at 4 °C. As with all antibodies avoid freeze/thaw cycles.
Note	For research use only
Application notes	CHRM3 antibody can be used in ELISA, and immunohistochemistry starting at 10 µg/mL.
Clonality	Polyclonal
Uniprot ID	P20309
NCBI	P20309
Dilution Range	CHRM3 antibody can be used in ELISA, and immunohistochemistry starting at 10 µg/mL.
Expiration Date	12 months from date of receipt.



Immunohistochemistry staining of CHRM3 i...