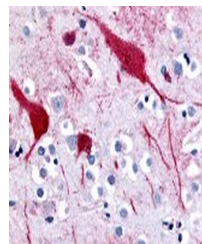


Product Datasheet

SLC5A9 Antibody (orb1250518)

Description	SLC5A9 Antibody
Species/Host	Rabbit
Reactivity	Gorilla, Human, Monkey
Conjugation	Unconjugated
Tested Applications	IHC
Immunogen	SLC5A9 antibody was raised against a peptide located near the C-Terminal region of SLC5A9 (Human).
Target	SLC5A9
Preservatives	PBS, 0.1% sodium azide.
Form/Appearance	Liquid
Concentration	1 mg/ml
Storage	SLC5A9 antibody should be stored long term (months) at -80 °C and short term (days) at 4 °C. As with all antibodies avoid freeze/thaw cycles.
Note	For research use only
Application notes	SLC5A9 antibody can be used in ELISA, Western Blot starting at 1:500 - 1:1000, immunohistochemistry starting at 10 µg/mL, and flow cytometry.
Clonality	Polyclonal
Uniprot ID	Q2M3M2
NCBI	Q2M3M2
Dilution Range	SLC5A9 antibody can be used in ELISA, Western Blot starting at 1:500 - 1:1000, immunohistochemistry starting at 10 µg/mL, and flow cytometry.
Expiration Date	12 months from date of receipt.



Immunohistochemistry staining of SLC5A9 ...