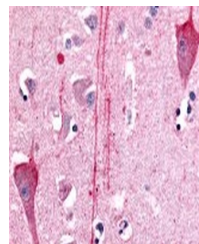


## Product Datasheet

### HTR7 Antibody (orb1250466)

|                            |  |
|----------------------------|--|
| <b>Description</b>         | HTR7 Antibody  |
| <b>Species/Host</b>        | Rabbit   |
| <b>Reactivity</b>          | Canine, Human, Monkey  |
| <b>Conjugation</b>         | Unconjugated   |
| <b>Tested Applications</b> | IHC  |
| <b>Immunogen</b>           | HTR7 antibody was raised against a peptide located in the N-Terminal domain of HTR7 (Human).   |
| <b>Target</b>              | HTR7   |
| <b>Preservatives</b>       | PBS, 0.1% sodium azide.  |
| <b>Form/Appearance</b>     | Liquid   |
| <b>Concentration</b>       | 0.6 mg/ml  |
| <b>Storage</b>             | HTR7 antibody should be stored long term (months) at -80 °C and short term (days) at 4 °C. As with all antibodies avoid freeze/thaw cycles.          |
| <b>Note</b>                | For research use only  |
| <b>Application notes</b>   | HTR7 antibody can be used in ELISA starting at 1:10000, Western Blot starting at 1:500 - 1:2000, and immunohistochemistry starting at 1:200 - 1:300. |
| <b>Clonality</b>           | Polyclonal   |
| <b>Uniprot ID</b>          | <b>P34969</b>  |
| <b>NCBI</b>                | <b>P34969</b>  |
| <b>Dilution Range</b>      | HTR7 antibody can be used in ELISA starting at 1:10000, Western Blot starting at 1:500 - 1:2000, and immunohistochemistry starting at 1:200 - 1:300. |
| <b>Expiration Date</b>     | 12 months from date of receipt.  |



Immunohistochemistry staining of HTR7 in...