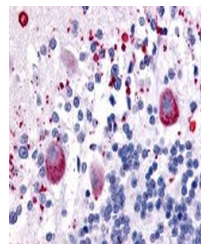


Product Datasheet

HTR7 Antibody (orb1250451)

Description	HTR7 Antibody
Species/Host	Rabbit
Reactivity	Bat, Bovine, Canine, Equine, Gorilla, Guinea pig, Hamster, Human, Monkey, Mouse, Porcine, Primate, Rat
Conjugation	Unconjugated
Tested Applications	ELISA, IHC
Immunogen	HTR7 antibody was raised against a peptide located near the C-Terminal region of HTR7 (Human).
Target	HTR7
Preservatives	PBS, 0.1% sodium azide.
Form/Appearance	Liquid
Concentration	1 mg/ml
Storage	HTR7 antibody should be stored long term (months) at -80 °C and short term (days) at 4 °C. As with all antibodies avoid freeze/thaw cycles.
Note	For research use only
Application notes	HTR7 antibody can be used in ELISA, and immunohistochemistry starting at 20 µg/mL.
Clonality	Polyclonal
Uniprot ID	P34969
NCBI	P34969
Dilution Range	HTR7 antibody can be used in ELISA, and immunohistochemistry starting at 20 µg/mL.
Expiration Date	12 months from date of receipt.



Immunohistochemistry staining of HTR7 in...