

Product Datasheet

CAMK2A Antibody (orb1249621)

Description

CAMK2A Antibody

Species/Host

Goat

Reactivity

Human, Mouse, Rat

Conjugation

Unconjugated

Tested

ELISA, FC, IF, IHC, WB

Applications
Immunogen

The immunogen for this antibody is: C-PRTAQSEETRVWHR

Target

CAMK2A

Preservatives

Supplied at 0.5 mg/ml in Tris saline, 0.02% sodium azide, pH 7.3 with 0.5% bovine serum albumin. Aliquot and store at -20°C. Minimize freezing and thawing.

Form/Appearance

Liquid

Concentration

500 ug/mL

Storage

Aliquot and store at -20°C. Minimize freezing and thawing.

Note

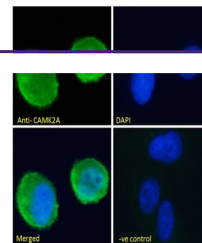
For research use only

Application notes

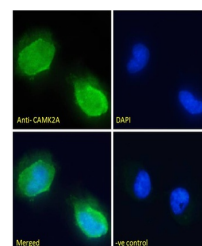
Peptide ELISA: antibody detection limit dilution 1:64000. Western Blot: Approx 58-60kDa band observed in Human (Cerebellum), Mouse and Rat Brain lysates (calculated MW of 55.3kDa according to Human NP_057065.2, and 54.1kDa according to Mouse NP_803126.1 and Rat NP_037052.1). An additional band of 50kDa was observed in some Rat Brain lysates and was successfully blocked by incubation with the immunizing peptide. The observed molecular weights correspond to earlier findings with different antibodies from other commercial sources. Recommended concentration: 0.03--0.3ug/ml. Primary incubation 1 hour at room temperature. Immunohistochemistry: In paraffin embedded Human Brain Cortex shows granular staining in the periphery of pyramidal cell bodies. Recommended concentration: 3-6ug/ml. Paraffin embedded Human Adrenal Gland. Recommended concentration: 3.75ug/ml. Immunofluorescence: Strong expression of the protein seen in the membranes of U2OS and U251 cells. Recommended concentration: 10ug/ml. Flow Cytometry: Flow cytometric analysis of Kelly cells. Recommended concentration: 10ug/ml.

Clonality

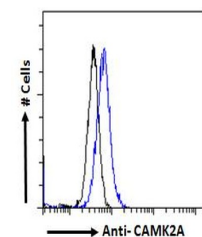
Polyclonal

Uniprot ID
Q9UQM7
NCBI
NP_741960.1, NP_057065.2


orb1249621 (3.8 ug/ml) staining of paraf...



orb1249621 (3.75 ug/ml) staining of para...



orb1249621 Immunofluorescence analysis o...