

Product Datasheet

EPM2AIP1 Antibody (orb1249236)

Description

EPM2AIP1 Antibody

Species/Host

Goat

Reactivity

Human

Conjugation

Unconjugated

Tested

ELISA, IHC, WB

Applications

Immunogen

The immunogen for this antibody is: C-TRNQHTLSQPLTDEH

Target

EPM2AIP1

Preservatives

Supplied at 0.5 mg/ml in Tris saline, 0.02% sodium azide, pH 7.3 with 0.5% bovine serum albumin. Aliquot and store at -20°C. Minimize freezing and thawing.

Form/Appearance

Liquid

Concentration

500 ug/mL

Storage

Aliquot and store at -20°C. Minimize freezing and thawing.

Note

For research use only

Application notes

Peptide ELISA: antibody detection limit dilution 1:8000. Western Blot: In transfected HEK293 transiently expressing full-length Human EPM2AIP1 (myc and DYKDDDDK tagged), a band of approx. 70kDa was observed. No bands were observed in mock-transfected HEK293 and the same band was observed using anti-DYKDDDDK tag antibody. Recommended concentration, 1-2ug/ml. Immunohistochemistry: In paraffin embedded Human Heart shows regular staining of sarcoplasmic reticulum in the cardiac fibers. Recommended concentration, 5-10ug/ml. Purchase the +ve control! The transfected lysate used to QC this product is available for sale. Please email sales@everestbiotech.com to request datasheet, pricing and delivery information.

Clonality

Polyclonal

Uniprot ID

[Q7L775](#)

NCBI

[NP_055620.1](#)

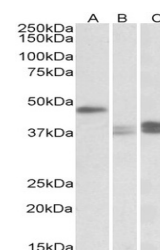
Dilution Range

Peptide ELISA: antibody detection limit dilution 1:8000. Western Blot: In transfected HEK293 transiently expressing full-length Human EPM2AIP1 (myc and DYKDDDDK tagged), a band of approx. 70kDa was observed. No bands were observed in mock-transfected HEK293 and the same band was observed using anti-DYKDDDDK tag antibody. Recommended concentration, 1-2ug/ml. Immunohistochemistry: In paraffin embedded

250kDa
150kDa
100kDa



HEK293
lysate (10 ug
protein in
RIPA buf...



orb1249236
(5 ug/ml)
staining of
paraffi...