

Product Datasheet

P2RX7 Antibody (orb1248936)

Description

P2RX7 Antibody

Species/Host

Goat

Reactivity

Human

Conjugation

Unconjugated

Tested

ELISA, IHC, WB

Applications

The immunogen for this antibody is: YETNKVTRIQSMNY-C

Target

P2RX7

Preservatives

Supplied at 0.5 mg/ml in Tris saline, 0.02% sodium azide, pH 7.3 with 0.5% bovine serum albumin. Aliquot and store at -20°C. Minimize freezing and thawing.

Form/Appearance

Liquid

Concentration

500 ug/mL

Storage

Aliquot and store at -20°C. Minimize freezing and thawing.

Note

For research use only

Application notes

Peptide ELISA: antibody detection limit dilution 1:16000. Western Blot: Approx 37kDa and 70kDa band observed in Human Brain (Frontal Cortex) lysates (calculated MW of 68.6kDa according to NP_002553.2). Recommended concentration: 1-3ug/ml. Primary incubation was 1 hour. An additional band of unknown identity was also consistently observed at 37kDa. This band was successfully blocked by incubation with the immunizing peptide. Immunohistochemistry: In paraffin embedded Human Brain Cortex shows membranous staining of cell bodies and processes. Recommended concentration: 3-6ug/ml. Paraffin embedded Human Kidney. Recommended concentration: 3.75ug/ml.

Clonality

Polyclonal

Uniprot ID

Q99572

NCBI

NP_002553.2

Dilution Range

Peptide ELISA: antibody detection limit dilution 1:16000. Western Blot: Approx 37kDa and 70kDa band observed in Human Brain (Frontal Cortex) lysates (calculated MW of 68.6kDa according to NP_002553.2). Recommended concentration: 1-3ug/ml. Primary incubation was 1 hour. An additional band of unknown identity was also consistently observed at 37kDa. This band was successfully blocked by incubation with the immunizing peptide. Immunohistochemistry: In paraffin embedded Human

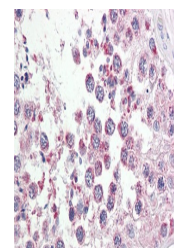
250kDa
150kDa
100kDa
75kDa

50kDa
37kDa
25kDa
20kDa
15kDa

orb1248936
staining (0.3
ug/ml) of
Human...

250kDa
150kDa
100kDa
75kDa
50kDa
37kDa
25kDa
20kDa
15kDa

orb1248936
(3.8 ug/ml)
staining of
paraf...



orb1248936
(3.75 ug/ml)
staining of
para...