

Product Datasheet

PRDM1 Antibody (orb1248924)

Description

PRDM1 Antibody

Species/Host

Goat

Reactivity

Human

Conjugation

Unconjugated

Tested

ELISA, FC, IF, WB

Applications
Immunogen

The immunogen for this antibody is: C-DISDNADRLEDVED

Target

PRDM1

Preservatives

Supplied at 0.5 mg/ml in Tris saline, 0.02% sodium azide, pH 7.3 with 0.5% bovine serum albumin. Aliquot and store at -20°C. Minimize freezing and thawing.

Form/Appearance

Liquid

Concentration

500 ug/mL

Storage

Aliquot and store at -20°C. Minimize freezing and thawing.

Note

For research use only

Application notes

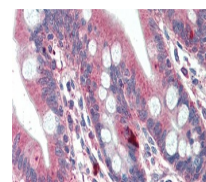
Peptide ELISA: antibody detection limit dilution 1:1000. Western Blot: Approx 90kDa band observed in lysates of cell lines A431 and Nuclear K562, and approx. 100kDa in lysates of cell line K562. An additional faint band of approx 70kDa was also seen in some A431 and K562 lysates (calculated MW of 91.8kDa according to NP_001189.2 isoform 1 and 76.8kDa according to NP_878911.1 isoform 2). Recommended concentration: 0.1-2g/ml. Primary incubation 1 hour at room temperature. Immunofluorescence: Strong expression of the protein seen in the nuclei of HeLa cells. Recommended concentration: 10ug/ml. Flow Cytometry: Flow cytometric analysis of A431 cells. Recommended concentration: 10ug/ml.

Clonality

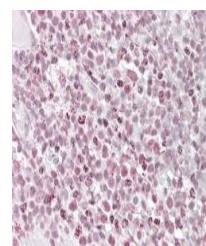
Polyclonal

Uniprot ID
075626
NCBI
NP_878911.1, NP_001189.2
Dilution Range

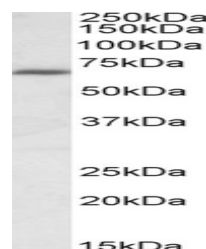
Peptide ELISA: antibody detection limit dilution 1:1000. Western Blot: Approx 90kDa band observed in lysates of cell lines A431 and Nuclear K562, and approx. 100kDa in lysates of cell line K562. An additional faint band of approx 70kDa was also seen in some A431 and K562 lysates (calculated MW of 91.8kDa according to NP_001189.2 isoform 1 and 76.8kDa according to



orb1248924 (3.8 ug/ml) staining of paraf...



orb1248924 (0.1 ug/ml) staining of A431 ...



orb1248924 Immunofluorescence analysis o...