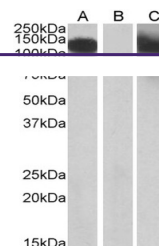


Product Datasheet

GPRIN3 Antibody (orb1248893)

Description

GPRIN3 Antibody



Species/Host

Goat

Reactivity

Human

Conjugation

Unconjugated

Tested

ELISA, WB

Applications

orb1248893
(1 ug/ml)
staining of
Human H...

Immunogen

The immunogen for this antibody is: C-TLEENRQTKT

Target

GPRIN3

Preservatives

Supplied at 0.5 mg/ml in Tris saline, 0.02% sodium azide, pH 7.3 with 0.5% bovine serum albumin. Aliquot and store at -20°C. Minimize freezing and thawing.

Form/Appearance

Liquid

Concentration

500 ug/mL

Storage

Aliquot and store at -20°C. Minimize freezing and thawing.

Note

For research use only

Application notes

Peptide ELISA: antibody detection limit dilution 1:4000. Western Blot: Approx 80kDa band observed in Human Brain (Hippocampus) lysates (calculated MW of 82.4kDa according to NP_938022.2). Recommended concentration: 1-3ug/ml. An additional band of unknown identity was also consistently observed at 26kDa. This band was successfully blocked by incubation with the immunizing peptide. We would appreciate any feedback from people in the field - have any such results been reported with other antibodies/lysates? Have any further splice variants/modified forms been reported?

Clonality

Polyclonal

Uniprot ID

[Q6ZVF9](#)

NCBI

[NP_938022.2](#)

Dilution Range

Peptide ELISA: antibody detection limit dilution 1:4000. Western Blot: Approx 80kDa band observed in Human Brain (Hippocampus) lysates (calculated MW of 82.4kDa according to NP_938022.2). Recommended concentration: 1-3ug/ml. An additional band of unknown identity was also consistently observed at 26kDa. This band was successfully blocked by incubation with the immunizing peptide. We would appreciate any feedback from people in the field - have any such results been reported with other antibodies/lysates? Have any further splice variants/modified forms been reported?