

Product Datasheet

FOXL2 Antibody (orb1248891)

Description
FOXL2 Antibody
Species/Host

Goat

Reactivity

Human, Mouse

Conjugation

Unconjugated

Tested

ELISA, IHC, WB

Applications

The immunogen for this antibody is: C-DSKTGALHSRLDL

Target

FOXL2

Preservatives

Supplied at 0.5 mg/ml in Tris saline, 0.02% sodium azide, pH 7.3 with 0.5% bovine serum albumin. Aliquot and store at -20°C. Minimize freezing and thawing.

Form/Appearance

Liquid

Concentration

500 ug/mL

Storage

Aliquot and store at -20°C. Minimize freezing and thawing.

Note

For research use only

Application notes

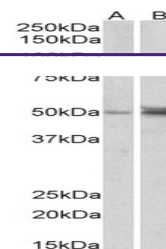
Peptide ELISA: antibody detection limit dilution 1:32000. Western Blot: Approx 50kDa band observed in Human and Mouse Ovary lysates (calculated MW of 38.8kDa according to Human NP_075555.1 and 38.9kDa according to Mouse NP_036150.1). The observed molecular weight corresponds to earlier findings with different antibodies from other commercial sources. Recommended concentration 0.3-1ug/ml. Primary incubation was 1 hour. Preliminary testing was unsuccessful on Rat Ovary for this particular batch. Immunohistochemistry: In paraffin embedded Human Ovary shows nuclear staining in select cells. Recommended concentration: 2-4ug/ml. Paraffin embedded Human Adrenal Gland. Recommended concentration: 5ug/ml.

Clonality

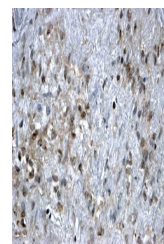
Polyclonal

Uniprot ID
P58012
NCBI
NP_075555.1
Dilution Range

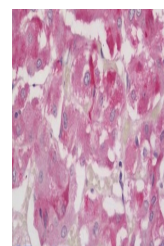
Peptide ELISA: antibody detection limit dilution 1:32000. Western Blot: Approx 50kDa band observed in Human and Mouse Ovary lysates (calculated MW of 38.8kDa according to Human NP_075555.1 and 38.9kDa according to Mouse NP_036150.1). The observed molecular weight corresponds to earlier findings with different antibodies from other commercial sources. Recommended concentration 0.3-1ug/ml. Primary incubation was 1 hour. Preliminary testing was unsuccessful on Rat Ovary for this particular



orb1248891
(2 µg/ml)
staining of
K562 c...



orb1248891
(2 ug/ml)
staining of
paraffi...



orb1248891
(5 ug/ml)
staining of
paraffi...