

Product Datasheet

Robo3.2 Antibody (orb1248150)

Description

Robo3.2 Antibody

Species/Host

Goat

Reactivity

Human

Conjugation

Unconjugated

Tested

ELISA, IHC

Applications

The immunogen for this antibody is: KESQGRGRGLEACR

Target

Robo3.2

Preservatives

Supplied at 0.5 mg/ml in Tris saline, 0.02% sodium azide, pH 7.3 with 0.5% bovine serum albumin. Aliquot and store at -20°C. Minimize freezing and thawing.

Form/Appearance

Liquid

Concentration

500 ug/mL

Storage

Aliquot and store at -20°C. Minimize freezing and thawing.

Note

For research use only

Application notes

Peptide ELISA: antibody detection limit dilution 1:128000. Western Blot: Preliminary experiments gave bands at approx 85kDa in Mouse fetal Brain lysates after 1ug/ml antibody staining. Please note that currently we cannot find an explanation in the literature for the bands we observe given the calculated size of 150kDa according to Mouse AAD11628.1. Both detected bands were successfully blocked by incubation with the immunizing peptide (and BLAST results with the immunizing peptide sequence did not identify any other proteins to explain the additional bands). Immunohistochemistry: Paraffin embedded Human Brain (Cerebellum). Recommended concentration: 5ug/ml.

Clonality

Polyclonal

Uniprot ID

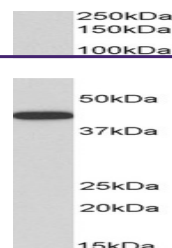
[Q9Z2I4](#)

NCBI

[AAD11628.1](#)

Dilution Range

Peptide ELISA: antibody detection limit dilution 1:128000. Western Blot: Preliminary experiments gave bands at approx 85kDa in Mouse fetal Brain lysates after 1ug/ml antibody staining. Please note that currently we cannot find an explanation in the literature for the bands we observe given the calculated size of 150kDa according to Mouse AAD11628.1. Both detected bands were successfully blocked by incubation with the immunizing peptide (and BLAST results with the immunizing peptide sequence did not identify any other proteins to explain the additional



orb1248150
(5 ug/ml)
staining of
paraffi...