

Product Datasheet

PACSIN1 Antibody (orb1247929)

Description

PACSIN1 Antibody

Species/Host

Goat

Reactivity

Human

Conjugation

Unconjugated

Tested

ELISA, IHC, WB

Applications

Immunogen

The immunogen for this antibody is: SSSYDEASLAPEET-C

Target

PACSIN1

Preservatives

Supplied at 0.5 mg/ml in Tris saline, 0.02% sodium azide, pH 7.3 with 0.5% bovine serum albumin. Aliquot and store at -20°C. Minimize freezing and thawing.

Form/Appearance

Liquid

Concentration

500 ug/mL

Storage

Aliquot and store at -20°C. Minimize freezing and thawing.

Note

For research use only

Application notes

Peptide ELISA: antibody detection limit dilution 1:32000. Western Blot: Approx 50kDa band observed in Human Brain (Hippocampus) lysates (calculated MW of 51.1kDa according to NP_065855.1). Recommended concentration: 0.03-0.1ug/ml. An additional band of unknown identity was also consistently observed at 37kDa. This band was successfully blocked by incubation with the immunising peptide. Immunohistochemistry: Paraffin embedded Human Brain (Cortex and Cerebellum). Recommended concentration: 2.5ug/ml.

Clonality

Polyclonal

Uniprot ID

[Q9BY11](#)

NCBI

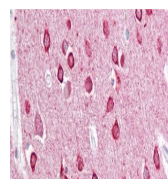
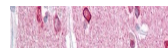
[NP_065855.1](#)

Dilution Range

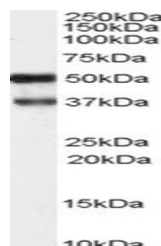
Peptide ELISA: antibody detection limit dilution 1:32000. Western Blot: Approx 50kDa band observed in Human Brain (Hippocampus) lysates (calculated MW of 51.1kDa according to NP_065855.1). Recommended concentration: 0.03-0.1ug/ml. An additional band of unknown identity was also consistently observed at 37kDa. This band was successfully blocked by incubation with the immunising peptide. Immunohistochemistry: Paraffin embedded Human Brain (Cortex and Cerebellum). Recommended concentration: 2.5ug/ml.

Expiration Date

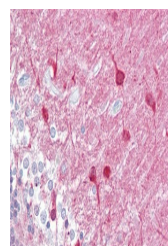
12 months from date of receipt.



orb1247929
(2.5 ug/ml)
staining of
paraf...



orb1247929
(1 ug/ml)
staining of
Hippoca...



orb1247929
(2.5 ug/ml)
staining of
paraf...