

---

## Product Datasheet

### CBX5 Antibody (orb1247696)

**Description**

CBX5 Antibody

**Species/Host**

Goat

**Reactivity**

Human, Mouse

**Conjugation**

Unconjugated

**Tested**

ELISA, FC, IHC, WB

**Applications**
**Immunogen**

The immunogen for this antibody is: C-NKRKSNFSNSADDIK

**Target**

CBX5

**Preservatives**

Supplied at 0.5 mg/ml in Tris saline, 0.02% sodium azide, pH 7.3 with 0.5% bovine serum albumin. Aliquot and store at -20°C. Minimize freezing and thawing.

**Form/Appearance**

Liquid

**Concentration**

500 ug/mL

**Storage**

Aliquot and store at -20°C. Minimize freezing and thawing.

**Note**

For research use only

**Application notes**

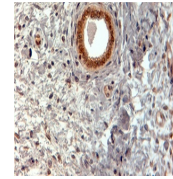
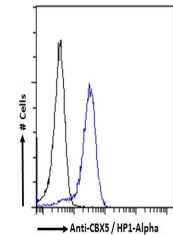
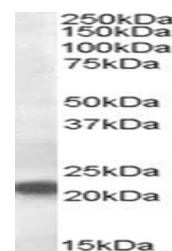
Peptide ELISA: antibody detection limit dilution 1:128000. Western Blot: Approx 24-25kDa band observed in lysates of cell lines K562, MCF7 and NIH3T3 (calculated MW of 22.2kDa according to Human NP\_036249.1 and Mouse NP\_001070257.1). Recommended concentration: 0.03-0.1ug/ml. Primary incubation 1 hour at room temperature. Immunohistochemistry: In paraffin embedded Human Uterus shows nuclear staining in the epithelial cells of the endometrium. Recommended concentration: 2-4ug/ml. Flow Cytometry: Flow cytometric analysis of HeLa cells. Recommended concentration: 10ug/ml.

**Clonality**

Polyclonal

**Uniprot ID**
**P45973**
**NCBI**
**NP\_001120794.1, NP\_001120793.1, NP\_036249.1**
**Dilution Range**

Peptide ELISA: antibody detection limit dilution 1:128000. Western Blot: Approx 24-25kDa band observed in lysates of cell lines K562, MCF7 and NIH3T3 (calculated MW of 22.2kDa according to Human NP\_036249.1 and Mouse NP\_001070257.1). Recommended concentration: 0.03-0.1ug/ml. Primary incubation 1 hour at room temperature. Immunohistochemistry: In paraffin embedded Human Uterus shows nuclear staining in the epithelial cells of the endometrium. Recommended concentration: 2-4ug/ml. Flow Cytometry: Flow cytometric analysis of HeLa cells. Recommended concentration: 10ug/ml.


 orb1247696  
(0.1 ug/ml)  
staining of  
K562 ...

 orb1247696 (2  
ug/ml)  
staining of  
paraffi...

 orb1247696  
Flow  
cytometric  
analysis of p...