

Product Datasheet

FARP1 Antibody (orb1247684)

Description

FARP1 Antibody

Species/Host

Goat

Reactivity

Human

Conjugation

Unconjugated

Tested Applications

ELISA, FC, IF

Immunogen

The immunogen for this antibody is: GEIEQRPTPGSRL-C

Target

FARP1

Preservatives

Supplied at 0.5 mg/ml in Tris saline, 0.02% sodium azide, pH 7.3 with 0.5% bovine serum albumin. Aliquot and store at -20°C. Minimize freezing and thawing.

Form/Appearance

Liquid

Concentration

500 ug/mL

Storage

Aliquot and store at -20°C. Minimize freezing and thawing.

Note

For research use only

Application notes

Peptide ELISA: antibody detection limit dilution 1:32000. Western Blot: Preliminary experiments showed an approx 110-120kDa band in Human Frontal Cortex lysates (calculated MW of 119kDa according to NP_005757.1).. An additional band was also consistently observed at 40kDa and was successfully blocked by incubation with the immunizing peptide. Recommended concentration: 0.3-1ug/ml. Primary incubation 1 hour at room temperature. Immunofluorescence: Strong expression of the protein seen in the cytoplasm of U2OS and HeLa cells. Recommended concentration: 10ug/ml. Flow Cytometry: Flow cytometric analysis of HepG2 cells. Recommended concentration: 10ug/ml.

Clonality

Polyclonal

Uniprot ID

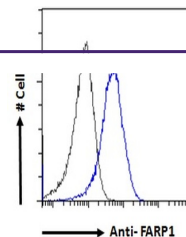
[Q9Y4F1](#)

NCBI

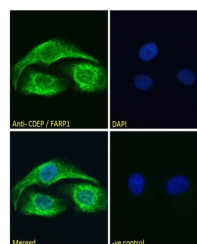
[NP_001273768.1](#), [NP_001001715.2](#), [NP_005757.1](#)

Dilution Range

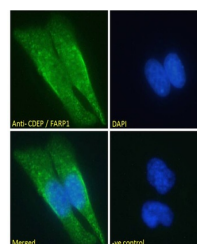
Peptide ELISA: antibody detection limit dilution 1:32000. Western Blot: Preliminary experiments showed an approx 110-120kDa band in Human Frontal Cortex lysates (calculated MW of 119kDa according to NP_005757.1).. An additional band was also consistently observed at 40kDa and was successfully blocked by incubation with the immunizing peptide. Recommended concentration: 0.3-1ug/ml. Primary incubation 1 hour at



orb1247684 Flow cytometric analysis of p...



orb1247684 Immunofluorescence analysis o...



orb1247684 Immunofluorescence analysis o...