

Product Datasheet

GPX7 Antibody (orb1247421)

Description

GPX7 Antibody

Species/Host

Goat

Reactivity

Human

Conjugation

Unconjugated

Tested

EIA, ELISA, WB

Applications

The immunogen for this antibody is: CNQFGQQEPDSNK

Target

GPX7

Preservatives

Supplied at 0.5 mg/ml in Tris saline, 0.02% sodium azide, pH 7.3 with 0.5% bovine serum albumin. Aliquot and store at -20°C. Minimize freezing and thawing.

Form/Appearance

Liquid

Concentration

500 ug/mL

Storage

Aliquot and store at -20°C. Minimize freezing and thawing.

Note

For research use only

Application notes

Peptide ELISA: antibody detection limit dilution 1:32000. Western Blot: Approx 20kDa band observed in Human Prostate lysates (calculated MW of 21.0kDa according to NP_056511.2). Recommended concentration: 0.3-1ug/ml. An additional band of unknown identity was also consistently observed at 40kDa. This band was successfully blocked by incubation with the immunising peptide. We would appreciate any feedback from people in the field - have any results been reported with other antibodies/lysates? Have any further splice variants/modified forms been reported? Enzyme immunoassay: Sandwich-type ELISA with increasing amount of recombinant GPX7 captured by a rabbit antibody. Recommended reporter concentration: 5-10ug/ml

Clonality

Polyclonal

Uniprot ID

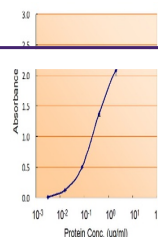
[Q96SL4](#)

NCBI

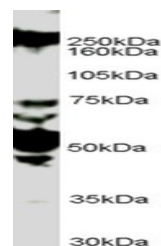
[NP_056511.2](#)

Dilution Range

Peptide ELISA: antibody detection limit dilution 1:32000. Western Blot: Approx 20kDa band observed in Human Prostate lysates (calculated MW of 21.0kDa according to NP_056511.2). Recommended concentration: 0.3-1ug/ml. An additional band of unknown identity was also consistently observed at 40kDa. This band was successfully blocked by incubation with the immunising peptide. We would appreciate any feedback from people in



orb1247421
(0.3 ug/ml)
staining of
Human...



orb1247421
(5 ug/ml) as
the reporter
ant...