

## Product Datasheet

### TRIM63 Antibody (orb1247240)

## Description

TRIM63 Antibody

### Species/Host

Goat

### Reactivity

Human

### Conjugation

Unconjugated

### Tested

ELISA, IHC

### Applications

### Immunogen

The immunogen for this antibody is: C-QQYQEQLDKSTKLVE

### Target

TRIM63

### Preservatives

Supplied at 0.5 mg/ml in Tris saline, 0.02% sodium azide, pH 7.3 with 0.5% bovine serum albumin. Aliquot and store at -20°C. Minimize freezing and thawing.

### Form/Appearance

Liquid

### Concentration

500 ug/mL

### Storage

Aliquot and store at -20°C. Minimize freezing and thawing.

### Note

For research use only

### Application notes

Peptide ELISA: antibody detection limit dilution 1:32000. Western Blot: Preliminary experiments gave an approx 75kDa band in Human Heart and Skeletal Muscle lysates after 0.3ug/ml antibody staining. Please note that currently we cannot find an explanation in the literature for the band we observe given the calculated size of 40.2kDa according to NP\_115977.2. The 75kDa band was successfully blocked by incubation with the immunizing peptide. Immunohistochemistry: Paraffin embedded Human Skeletal Muscle. Recommended concentration: 1.25ug/ml.

### Clonality

Polyclonal

### Uniprot ID

[Q969Q1](#)

### NCBI

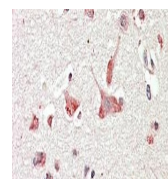
[NP\\_115977.2](#)

### Dilution Range

Peptide ELISA: antibody detection limit dilution 1:32000. Western Blot: Preliminary experiments gave an approx 75kDa band in Human Heart and Skeletal Muscle lysates after 0.3ug/ml antibody staining. Please note that currently we cannot find an explanation in the literature for the band we observe given the calculated size of 40.2kDa according to NP\_115977.2. The 75kDa band was successfully blocked by incubation with the immunizing peptide. Immunohistochemistry: Paraffin embedded Human Skeletal Muscle. Recommended concentration: 1.25ug/ml.

### Expiration Date

12 months from date of receipt.



orb1247240  
(1.25 ug/ml)  
staining of  
para...