

Product Datasheet

NDRG1 Antibody (orb1247224)

Description

NDRG1 Antibody

Species/Host

Goat

Reactivity

Human

Conjugation

Unconjugated

Tested

ELISA, IHC, WB

Applications

Immunogen

The immunogen for this antibody is: GNSAGPKSMEVSC

Target

NDRG1

Preservatives

Supplied at 0.5 mg/ml in Tris saline, 0.02% sodium azide, pH 7.3 with 0.5% bovine serum albumin. Aliquot and store at -20°C. Minimize freezing and thawing.

Form/Appearance

Liquid

Concentration

500 ug/mL

Storage

Aliquot and store at -20°C. Minimize freezing and thawing.

Note

For research use only

Application notes

Peptide ELISA: antibody detection limit dilution 1:32000. Western Blot: Approx 48kDa band observed in Human Kidney, and approx 50kDa band observed in Human Brain (Cerebellum) and Testis lysates (calculated MW of 42.8kDa according to NP_006087.2). The observed molecular weight corresponds to earlier findings with different antibodies from other commercial sources. Recommended concentration: 0.1-0.3ug/ml. Primary incubation was 1 hour. Immunohistochemistry: In paraffin embedded Human hepatocellular carcinoma shows strong labeling of membranes and weaker staining of cytoplasm. These observations are consistent with those obtained by different antibodies. Recommended concentration: 0.5-2ug/ml. Paraffin embedded Human Prostate and Colon. Recommended concentration: 2.5ug/ml.

Clonality

Polyclonal

Uniprot ID

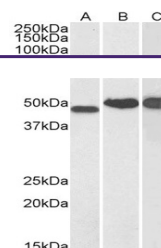
[Q92597](#)

NCBI

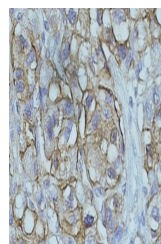
[NP_006087.2](#)

Dilution Range

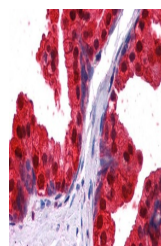
Peptide ELISA: antibody detection limit dilution 1:32000. Western Blot: Approx 48kDa band observed in Human Kidney, and approx 50kDa band observed in Human Brain (Cerebellum) and Testis lysates (calculated MW of 42.8kDa according to NP_006087.2). The observed molecular weight corresponds to earlier findings with different antibodies from other commercial sources.



orb1247224
(0.1 ug/ml)
staining of
Human...



orb1247224
(0.5 ug/ml)
staining of
paraf...



orb1247224
(2.5 ug/ml)
staining of
paraf...