

## Product Datasheet

### NCDN Antibody (orb1247214)

## Description

NCDN Antibody

### Species/Host

Goat

### Reactivity

Human

### Conjugation

Unconjugated

### Tested

ELISA, WB

### Applications

### Immunogen

The immunogen for this antibody is: C-HYLLQVGSEKQKEP

### Target

NCDN

### Preservatives

Supplied at 0.5 mg/ml in Tris saline, 0.02% sodium azide, pH 7.3 with 0.5% bovine serum albumin. Aliquot and store at -20°C. Minimize freezing and thawing.

### Form/Appearance

Liquid

### Concentration

500 ug/mL

### Storage

Aliquot and store at -20°C. Minimize freezing and thawing.

### Note

For research use only

### Application notes

Peptide ELISA: antibody detection limit dilution 1:16000. Western Blot: Approx 75kDa band observed in lysates of cell lines HepG2 and U251 (calculated MW of 77.2kDa according to NP\_001014841.1). An additional band of unknown identity was also observed in U251 lysates at 55kDa. This band was successfully blocked by incubation with the immunizing peptide. Recommended concentration: 0.3-1ug/ml. Primary incubation 1 hour at room temperature. Preliminary testing was unsuccessful on Rat and Mouse Kidney and Brain and NIH3T3 cell line for this particular batch.

### Clonality

Polyclonal

### Uniprot ID

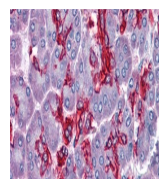
[Q9UBB6](#)

### NCBI

[NP\\_055099.1](#), [NP\\_001014841.1](#)

### Dilution Range

Peptide ELISA: antibody detection limit dilution 1:16000. Western Blot: Approx 75kDa band observed in lysates of cell lines HepG2 and U251 (calculated MW of 77.2kDa according to NP\_001014841.1). An additional band of unknown identity was also observed in U251 lysates at 55kDa. This band was successfully blocked by incubation with the immunizing peptide. Recommended concentration: 0.3-1ug/ml. Primary incubation 1 hour at room temperature. Preliminary testing was unsuccessful on Rat and Mouse Kidney and Brain and NIH3T3 cell line for this particular batch.



orb1247214  
(0.3 ug/ml)  
staining of  
HepG2...