

## Product Datasheet

### SPRY1 Antibody (orb1246912)

## Description

SPRY1 Antibody

### Species/Host

Goat

### Reactivity

Human, Mouse

### Conjugation

Unconjugated

### Tested

ELISA, FC, IF, IHC, WB

### Applications

### Immunogen

The immunogen for this antibody is: CPSRGQGKPS

### Target

SPRY1

### Preservatives

Supplied at 0.5 mg/ml in Tris saline, 0.02% sodium azide, pH 7.3 with 0.5% bovine serum albumin. Aliquot and store at -20°C. Minimize freezing and thawing.

### Form/Appearance

Liquid

### Concentration

500 ug/mL

### Storage

Aliquot and store at -20°C. Minimize freezing and thawing.

### Note

For research use only

### Application notes

Peptide ELISA: antibody detection limit dilution 1:16000. Western Blot: Approx 37kDa band observed in Human Kidney lysates (calculated MW of 35.1kDa according to NP\_005832.1 ). Recommended concentration: 0.3-1ug/ml. Primary incubation 1 hour at room temperature. This product has been successfully used in ERMS cells (PMID: 20068162). Recommended concentration: 1-3ug/ml. Immunohistochemistry: This product has been successfully used by customers in paraffin embedded Mouse Brain, showing nuclear staining. Recommended concentration: 1-3ug/ml. Immunofluorescence: Strong expression of the protein seen in the cytoplasm and Golgi apparatus of HeLa and HepG2 cells. Recommended concentration: 10ug/ml. Flow Cytometry: Flow cytometric analysis of HEK293 cells. Recommended concentration: 10ug/ml.

### Clonality

Polyclonal

### Uniprot ID

[O43609](#)

### NCBI

[NP\\_955359.1](#), [NP\\_005832.1](#)

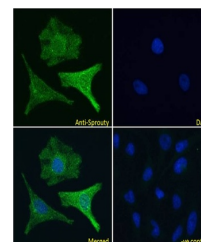
### Dilution Range

Peptide ELISA: antibody detection limit dilution 1:16000. Western Blot: Approx 37kDa band observed in Human Kidney lysates (calculated MW of 35.1kDa according to NP\_005832.1 ). Recommended concentration: 0.3-1ug/ml. Primary incubation 1 hour at

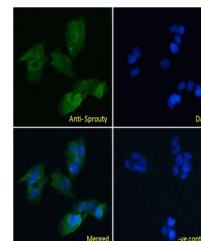
250kDa  
150kDa  
100kDa

50kDa  
37kDa  
25kDa  
20kDa  
15kDa

orb1246912 (0.3 ug/ml) staining of Human...



orb1246912 Immunofluorescence analysis o...



orb1246912 Immunofluorescence analysis o...