

Product Datasheet

ZDHHC8 Antibody (orb1246768)

Description

ZDHHC8 Antibody

Species/Host

Goat

Reactivity

Human

Conjugation

Unconjugated

Tested

ELISA, WB

Applications

Immunogen

The immunogen for this antibody is: C-QRDHPQLKTPPSK

Target

ZDHHC8

Preservatives

Supplied at 0.5 mg/ml in Tris saline, 0.02% sodium azide, pH 7.3 with 0.5% bovine serum albumin. Aliquot and store at -20°C. Minimize freezing and thawing.

Form/Appearance

Liquid

Concentration

500 ug/mL

Storage

Aliquot and store at -20°C. Minimize freezing and thawing.

Note

For research use only

Application notes

Peptide ELISA: antibody detection limit dilution 1:16000. Western Blot: Approx 80-85kDa band observed in Human Brain (Frontal Cortex) lysates (calculated MW of 81.4kDa according to NP_037505.1). Recommended concentration: 1-3ug/ml. An additional band of 48kDa was consistently observed, however this band was not blocked by the immunizing peptide and it is therefore a non-specific signal. We call for caution when used for other assays than Western blot.

Clonality

Polyclonal

Uniprot ID

[Q9ULC8](#)

NCBI

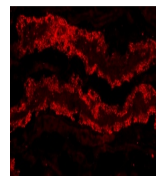
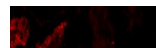
[NP_037505.1](#)

Dilution Range

Peptide ELISA: antibody detection limit dilution 1:16000. Western Blot: Approx 80-85kDa band observed in Human Brain (Frontal Cortex) lysates (calculated MW of 81.4kDa according to NP_037505.1). Recommended concentration: 1-3ug/ml. An additional band of 48kDa was consistently observed, however this band was not blocked by the immunizing peptide and it is therefore a non-specific signal. We call for caution when used for other assays than Western blot.

Expiration Date

12 months from date of receipt.



orb1246768
(0.1 ug/ml)
staining of
Human...