

## Product Datasheet

### ZIC5 Antibody (orb1246766)

## Description

ZIC5 Antibody

### Species/Host

Goat

### Reactivity

Human

### Conjugation

Unconjugated

### Tested

ELISA, IHC

### Applications

### Immunogen

The immunogen for this antibody is: C-EIYGNPEVVRTIH

### Target

ZIC5

### Preservatives

Supplied at 0.5 mg/ml in Tris saline, 0.02% sodium azide, pH 7.3 with 0.5% bovine serum albumin. Aliquot and store at -20°C. Minimize freezing and thawing.

### Form/Appearance

Liquid

### Concentration

500 ug/mL

### Storage

Aliquot and store at -20°C. Minimize freezing and thawing.

### Note

For research use only

### Application notes

Peptide ELISA: antibody detection limit dilution 1:128000. Western Blot: Preliminary experiments gave an approx 45kDa band in human brain lysates at 1ug/ml. This band was successfully blocked by incubation with the immunising peptide. Please note that currently we cannot find an explanation in the literature for the band we observe given the predicted size of approx. 73kDa according to NP\_149123. Immunohistochemistry: Paraffin embedded Human Small Intestine, Skin and Prostate. Recommended concentration: 3.75ug/ml.

### Clonality

Polyclonal

### Uniprot ID

[Q96T25](#)

### NCBI

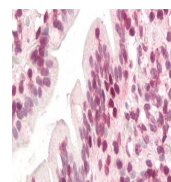
[NP\\_149123.2](#)

### Dilution Range

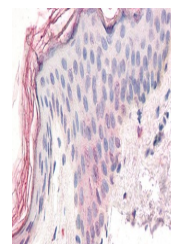
Peptide ELISA: antibody detection limit dilution 1:128000. Western Blot: Preliminary experiments gave an approx 45kDa band in human brain lysates at 1ug/ml. This band was successfully blocked by incubation with the immunising peptide. Please note that currently we cannot find an explanation in the literature for the band we observe given the predicted size of approx. 73kDa according to NP\_149123. Immunohistochemistry: Paraffin embedded Human Small Intestine, Skin and Prostate. Recommended concentration: 3.75ug/ml.

### Expiration Date

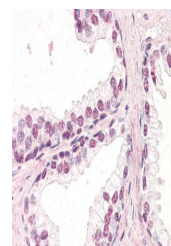
12 months from date of receipt.



orb1246766  
(3.75 ug/ml)  
staining of  
para...



orb1246766  
(3.75 ug/ml)  
staining of  
para...



orb1246766  
(3.75 ug/ml)  
staining of  
para...