

## Product Datasheet

### DLL1 Antibody (orb1246415)

## Description

DLL1 Antibody

### Species/Host

Goat

### Reactivity

Human, Mouse, Rat

### Conjugation

Unconjugated

### Tested

ELISA, FC, IF, WB

### Applications

### Immunogen

The immunogen for this antibody is: C-ATQRHLTVGEEWSQD

### Target

DLL1

### Preservatives

Supplied at 0.5 mg/ml in Tris saline, 0.02% sodium azide, pH 7.3 with 0.5% bovine serum albumin. Aliquot and store at -20°C. Minimize freezing and thawing.

### Form/Appearance

Liquid

### Concentration

500 ug/mL

### Storage

Aliquot and store at -20°C. Minimize freezing and thawing.

### Note

For research use only

### Application notes

Peptide ELISA: antibody detection limit dilution 1:16000. Western Blot: Approx 75kDa band observed in Mouse Heart and Rat Pancreas lysates (calculated MW of 78.5kDa according to Mouse NP\_031891.2 and 77.4kDa according to Rat NP\_114452.1). An additional band of unknown identity was also consistently observed at 25kDa. This band was successfully blocked by incubation with the immunizing peptide. Recommended concentration: 0.3-7ug/ml. Primary incubation 1 hour at room temperature. Immunofluorescence: Strong expression of the protein seen in the cytoplasm/ membranes of HeLa cells. Recommended concentration: 10ug/ml. Flow Cytometry: Flow cytometric analysis of HeLa cells. Recommended concentration: 10ug/ml.

### Clonality

Polyclonal

### Uniprot ID

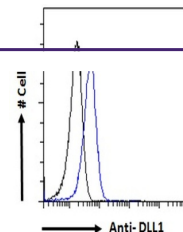
**O00548**

### NCBI

**NP\_005609.3**

### Dilution Range

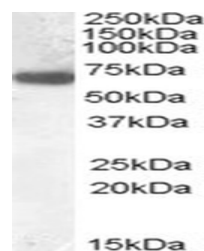
Peptide ELISA: antibody detection limit dilution 1:16000. Western Blot: Approx 75kDa band observed in Mouse Heart and Rat Pancreas lysates (calculated MW of 78.5kDa according to Mouse NP\_031891.2 and 77.4kDa according to Rat NP\_114452.1). An additional band of unknown identity was also consistently observed at 25kDa.



orb1246415 (2 ug/ml) staining of Rat Pan...



orb1246415 Immunofluorescence analysis o...



orb1246415 Flow cytometric analysis of p...