
Product Datasheet

KCNN3 Antibody (orb1243196)

Description

KCNN3 Antibody

Species/Host

Rabbit

Reactivity

Canine, Human, Mouse, Rat

Conjugation

Unconjugated

Tested Applications

ELISA, WB

Immunogen

Antibody produced in rabbits immunized with a synthetic peptide corresponding a region of human KCNN3.

Target

KCNN3

Preservatives

Purified antibody supplied in 1x PBS buffer with 0.09% (w/v) sodium azide and 2% sucrose.

Form/Appearance

Liquid

Concentration

batch dependent

Storage

For short periods of storage (days) store at 4°C. For longer periods of storage, store KCNN3 antibody at -20°C. As with any antibody avoid repeat freeze-thaw cycles.

Note

For research use only

Application notes

KCNN3 antibody can be used for detection of KCNN3 by ELISA at 1:62500. KCNN3 antibody can be used for detection of KCNN3 by western blot at 2 µg/mL, and HRP conjugated secondary antibody should be diluted 1:50,000 - 100,000.

Clonality

Polyclonal

MW

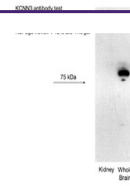
81 kDa, 48 kDa

Uniprot ID
[Q9UGI6](#)
NCBI
[NP_002240](#)
Dilution Range

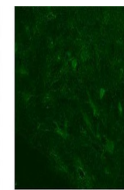
KCNN3 antibody can be used for detection of KCNN3 by ELISA at 1:62500. KCNN3 antibody can be used for detection of KCNN3 by western blot at 2 µg/mL, and HRP conjugated secondary antibody should be diluted 1:50,000 - 100,000.

Expiration Date

12 months from date of receipt.



Antibody used in WB on Mouse kidney, bra...



See PIC 1 Data and Customer Feedback for more information

Antibody used in IHC on Rhesus macaque s...



Antibody used in WB on Human Daudi at 0....