

Product Datasheet

AAK1 Antibody (orb1240305)

Description

AAK1 Antibody

Species/Host

Rabbit

Reactivity

Human, Mouse, Rat

Conjugation

Unconjugated

Tested

ELISA, ICC, IF, WB

Applications

Immunogen

Aak1 antibody was raised against a 20 amino acid synthetic peptide near the amino terminus of the human Aak1. The immunogen is located within amino acids 190 - 240 of Aak1.

Target

AAK1

Preservatives

Aak1 Antibody is supplied in PBS containing 0.02% sodium azide.

Form/Appearance

Liquid

Concentration

1 mg/mL

Storage

Aak1 antibody can be stored at 4°C for three months and -20°C, stable for up to one year. As with all antibodies care should be taken to avoid repeated freeze thaw cycles. Antibodies should not be exposed to prolonged high temperatures.

Note

For research use only

Application notes

Aak1 antibody can be used for detection of Aak1 by Western blot at 1 - 2 µg/mL. Antibody can also be used for immunocytochemistry starting at 5 µg/mL. For immunofluorescence start at 20 µg/mL. Antibody validated: Western Blot in mouse samples; Immunocytochemistry in mouse samples and Immunofluorescence in human samples. All other applications and species not yet tested.

Isotype

IgG

Clonality

Polyclonal

Uniprot ID

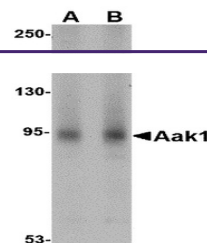
[Q2M2I8](#)

NCBI

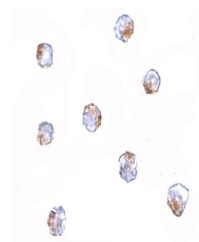
[NP_055726](#)

Dilution Range

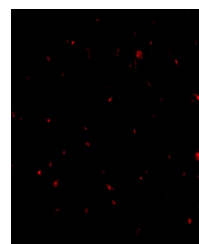
Aak1 antibody can be used for detection of Aak1 by Western blot at 1 - 2 µg/mL. Antibody can also be used for immunocytochemistry starting at 5 µg/mL. For immunofluorescence start at 20 µg/mL. Antibody validated: Western Blot in mouse samples; Immunocytochemistry in mouse samples and



Western blot analysis of Aak1 in A-20 ly...



Immunocytochemistry of Aak1 in A-20 cell...



Immunofluorescence of aak1 in human brai...