

## Product Datasheet

### AATF Antibody (orb1240304)

## Description

AATF Antibody

### Species/Host

Rabbit

### Reactivity

Human, Mouse

### Conjugation

Unconjugated

### Tested

ELISA, IF, IHC-P, WB

### Applications

### Immunogen

AATF antibody was raised against a 12 amino acid synthetic peptide from near the carboxy terminus of human AATF. The immunogen is located within the last 50 amino acids of AATF.

### Target

AATF

### Preservatives

AATF Antibody is supplied in PBS containing 0.02% sodium azide.

### Form/Appearance

Liquid

### Concentration

1 mg/mL

### Storage

AATF antibody can be stored at 4°C for three months and -20°C, stable for up to one year. As with all antibodies care should be taken to avoid repeated freeze thaw cycles. Antibodies should not be exposed to prolonged high temperatures.

### Note

For research use only

### Application notes

AATF antibody can be used for the detection of AATF by Western blot at 0.5 - 2 µg/mL. Antibody can also be used for immunohistochemistry starting at 10 µg/mL. For immunofluorescence start at 20 µg/mL. Antibody validated: Western Blot in human samples; Immunohistochemistry in human samples and Immunofluorescence in human samples. All other applications and species not yet tested.

### Isotype

IgG

### Clonality

Polyclonal

### Uniprot ID

[Q9NY61](#)

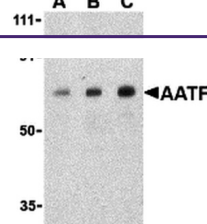
### NCBI

[NP\\_036270](#)

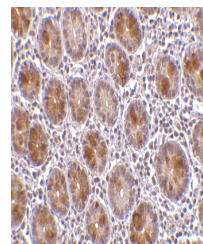
### Dilution Range

AATF antibody can be used for the detection of AATF by Western blot at 0.5 - 2 µg/mL. Antibody can also be used for immunohistochemistry starting at 10 µg/mL. For immunofluorescence start at 20 µg/mL. Antibody validated: Western Blot in human samples; Immunohistochemistry in human samples

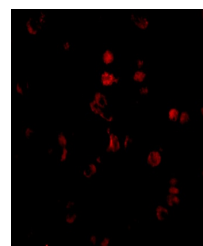
A B C



Western blot analysis of AATF in human s...



Immunohistochemistry of AATF in human sm...



Immunofluorescence of AATF in Human Smal...