

## Product Datasheet

### ADAMTSL5 Antibody (orb1240288)

**Description**

ADAMTSL5 Antibody

**Species/Host**

Gallus

**Reactivity**

Human, Mouse, Rat

**Conjugation**

Unconjugated

**Tested**

ELISA, IF, IHC-P, WB

**Applications**
**Immunogen**

ADAMTSL5 antibody was raised against a 17 amino acid synthetic peptide near the carboxy terminus of human ADAMTSL5. The immunogen is located within the last 50 amino acids of ADAMTSL5.

**Target**

ADAMTSL5

**Preservatives**

ADAMTSL5 Antibody is supplied in PBS containing 0.02% sodium azide.

**Form/Appearance**

Liquid

**Concentration**

1 mg/mL

**Storage**

ADAMTSL5 antibody can be stored at 4°C for three months and -20°C, stable for up to one year. As with all antibodies care should be taken to avoid repeated freeze thaw cycles. Antibodies should not be exposed to prolonged high temperatures.

**Note**

For research use only

**Application notes**

ADAMTSL5 antibody can be used for detection of ADAMTSL5 by Western blot at 1 µg/mL. Antibody can also be used for immunohistochemistry starting at 5 µg/mL. For immunofluorescence start at 20 µg/mL. Antibody validated: Western Blot in human samples; Immunohistochemistry in mouse samples and Immunofluorescence in mouse samples. All other applications and species not yet tested.

**Isotype**

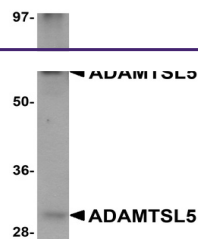
IgY

**Clonality**

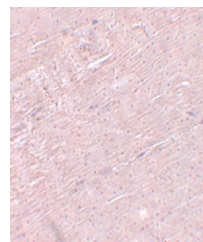
Polyclonal

**Uniprot ID**
**Q6ZMM2**
**NCBI**
**NP\_998769**
**Dilution Range**

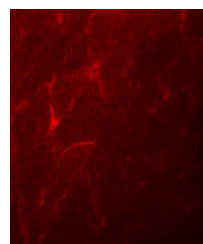
ADAMTSL5 antibody can be used for detection of ADAMTSL5 by Western blot at 1 µg/mL. Antibody can also be used for immunohistochemistry starting at 5 µg/mL. For immunofluorescence start at 20 µg/mL. Antibody validated: Western Blot in human samples; Immunohistochemistry in mouse samples



Western blot analysis of ADAMTSL5 in hum...



Immunohistochemistry of ADAMTSL5 in mous...



Immunofluorescence of ADAMTSL5 in mouse ...