

## Product Datasheet

### FYB Antibody (orb1240286)

## Description

FYB Antibody

### Species/Host

Rabbit

### Reactivity

Human

### Conjugation

Unconjugated

### Tested

ELISA, ICC, IF, WB

### Applications

### Immunogen

ADAP antibody was raised against a 17 amino acid synthetic peptide from near the amino terminus of human ADAP. The immunogen is located within amino acids 60 - 110 of ADAP.

### Target

FYB

### Preservatives

ADAP Antibody is supplied in PBS containing 0.02% sodium azide.

### Form/Appearance

Liquid

### Concentration

1 mg/mL

### Storage

ADAP antibody can be stored at 4°C for three months and -20°C, stable for up to one year. As with all antibodies care should be taken to avoid repeated freeze thaw cycles. Antibodies should not be exposed to prolonged high temperatures.

### Note

For research use only

### Application notes

ADAP antibody can be used for detection of ADAP by Western blot at 0.5 - 1 µg/mL. Antibody can also be used for immunocytochemistry starting at 10 µg/mL. For immunofluorescence start at 20 µg/mL. Antibody validated: Western Blot in human samples; Immunocytochemistry in human samples and Immunofluorescence in human samples. All other applications and species not yet tested.

### Isotype

IgG

### Clonality

Polyclonal

### Uniprot ID

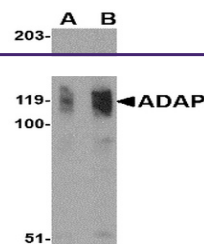
[O15117](#)

### NCBI

[NP\\_001456](#)

### Dilution Range

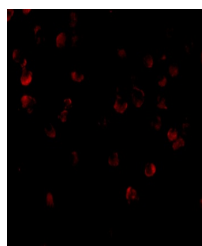
ADAP antibody can be used for detection of ADAP by Western blot at 0.5 - 1 µg/mL. Antibody can also be used for immunocytochemistry starting at 10 µg/mL. For immunofluorescence start at 20 µg/mL. Antibody validated: Western Blot in human samples; Immunocytochemistry in human samples and



Western blot analysis of ADAP in K562 ce...



Immunocytochemistry of ADAP in K562 cell...



Immunofluorescence of ADAP in K562 cells...