

Product Datasheet

AES Antibody (orb1240280)

Description

AES Antibody

Species/Host

Rabbit

Reactivity

Human, Mouse, Rat

Conjugation

Unconjugated

Tested

ELISA, ICC, IF, WB

Applications

Immunogen

AES antibody was raised against a 16 amino acid synthetic peptide from near the carboxy terminus of human AES. The immunogen is located within the last 50 amino acids of AES.

Target

AES

Preservatives

AES Antibody is supplied in PBS containing 0.02% sodium azide.

Form/Appearance

Liquid

Concentration

1 mg/mL

Storage

AES antibody can be stored at 4°C for three months and -20°C, stable for up to one year. As with all antibodies care should be taken to avoid repeated freeze thaw cycles. Antibodies should not be exposed to prolonged high temperatures.

Note

For research use only

Application notes

AES antibody can be used for the detection of AES by Western blot at 1 - 4 µg/mL. Antibody can also be used for immunocytochemistry starting at 10 µg/mL. For immunofluorescence start at 20 µg/mL. Antibody validated: Western Blot in human samples; Immunocytochemistry in human samples and Immunofluorescence in human samples. All other applications and species not yet tested.

Isotype

IgG

Clonality

Polyclonal

Uniprot ID

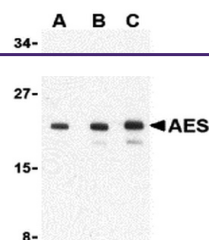
[Q08117](#)

NCBI

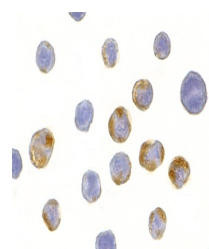
[NP_945320](#)

Dilution Range

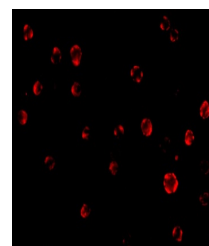
AES antibody can be used for the detection of AES by Western blot at 1 - 4 µg/mL. Antibody can also be used for immunocytochemistry starting at 10 µg/mL. For immunofluorescence start at 20 µg/mL. Antibody validated: Western Blot in human samples; Immunocytochemistry in human samples and



Western blot analysis of AES in 293 cell...



Immunocytochemistry of AES in HeLa cells...



Immunofluorescence of AES in HeLa cells ...