

Product Datasheet

AFAP1L2 Antibody (orb1240278)

Description

AFAP1L2 Antibody

Species/Host

Rabbit

Reactivity

Human, Mouse, Rat

Conjugation

Unconjugated

Tested

ELISA, IF, IHC-P, WB

Applications

Immunogen

AFAP1L2 antibody was raised against a 15 amino acid synthetic peptide near the carboxy terminus of human AFAP1L2. The immunogen is located within the last 50 amino acids of AFAP1L2.

Target

AFAP1L2

Preservatives

AFAP1L2 Antibody is supplied in PBS containing 0.02% sodium azide.

Form/Appearance

Liquid

Concentration

1 mg/mL

Storage

AFAP1L2 antibody can be stored at 4°C for three months and -20°C, stable for up to one year. As with all antibodies care should be taken to avoid repeated freeze thaw cycles. Antibodies should not be exposed to prolonged high temperatures.

Note

For research use only

Application notes

AFAP1L2 antibody can be used for detection of AFAP1L2 by Western blot at 1 - 2 µg/mL. Antibody can also be used for immunohistochemistry starting at 2.5 µg/mL. For immunofluorescence start at 20 µg/mL. Antibody validated: Western Blot in mouse samples; Immunohistochemistry in human samples and Immunofluorescence in human samples. All other applications and species not yet tested.

Isotype

IgG

Clonality

Polyclonal

Uniprot ID

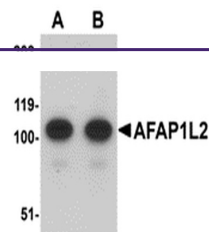
[Q8N4X5](#)

NCBI

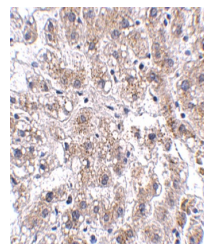
[NP_001001936](#)

Dilution Range

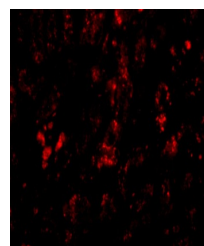
AFAP1L2 antibody can be used for detection of AFAP1L2 by Western blot at 1 - 2 µg/mL. Antibody can also be used for immunohistochemistry starting at 2.5 µg/mL. For immunofluorescence start at 20 µg/mL. Antibody validated: Western Blot in mouse samples; Immunohistochemistry in human samples



Western blot analysis of AFAP1L2 in mouse samples.



Immunohistochemistry of AFAP1L2 in human tissue.



Immunofluorescence of AFAP1L2 in human tissue.