

Product Datasheet

AFAP1L1 Antibody (orb1240277)

Description

AFAP1L1 Antibody

Species/Host

Rabbit

Reactivity

Human, Mouse

Conjugation

Unconjugated

Tested

ELISA, ICC, IF, WB

Applications
Immunogen

AFAP1L1 antibody was raised against a 19 amino acid synthetic peptide near the amino terminus of human AFAP1L1. The immunogen is located within amino acids 70 - 120 of AFAP1L.

Target

AFAP1L1

Preservatives

AFAP1L Antibody is supplied in PBS containing 0.02% sodium azide.

Form/Appearance

Liquid

Concentration

1 mg/mL

Storage

AFAP1L antibody can be stored at 4°C for three months and -20°C, stable for up to one year. As with all antibodies care should be taken to avoid repeated freeze thaw cycles. Antibodies should not be exposed to prolonged high temperatures.

Note

For research use only

Application notes

AFAP1L1 antibody can be used for detection of AFAP1L1 by Western blot at 1 µg/mL. Antibody can also be used for immunocytochemistry starting at 5 µg/mL. For immunofluorescence start at 20 µg/mL. Antibody validated: Western Blot in human samples; Immunocytochemistry in human samples and Immunofluorescence in human samples. All other applications and species not yet tested.

Isotype

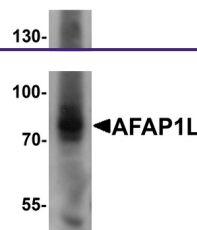
IgG

Clonality

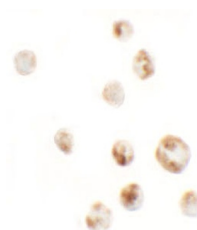
Polyclonal

Uniprot ID
Q8TED9
NCBI
NP_689619
Dilution Range

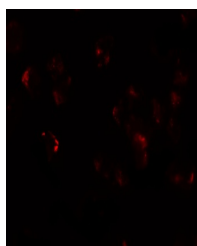
AFAP1L1 antibody can be used for detection of AFAP1L1 by Western blot at 1 µg/mL. Antibody can also be used for immunocytochemistry starting at 5 µg/mL. For immunofluorescence start at 20 µg/mL. Antibody validated: Western Blot in human samples; Immunocytochemistry in human samples



Western blot analysis of AFAP1L1 in A549...



Immunocytochemistry of AFAP1L in A549 ce...



Immunofluorescence of AFAP1L in A549 cel...