

Product Datasheet

ANG Antibody (orb1240248)

Description

ANG Antibody

Species/Host

Rabbit

Reactivity

Human, Mouse, Rat

Conjugation

Unconjugated

Tested

ELISA, IF, WB

Applications

Immunogen

ANG antibody was raised against a 15 amino acid synthetic peptide near the center of human ANG. The immunogen is located within amino acids 70 - 120 of ANG.

Target

ANG

Preservatives

ANG Antibody is supplied in PBS containing 0.02% sodium azide.

Form/Appearance

Liquid

Concentration

1 mg/mL

Storage

ANG antibody can be stored at 4°C for three months and -20°C, stable for up to one year. As with all antibodies care should be taken to avoid repeated freeze thaw cycles. Antibodies should not be exposed to prolonged high temperatures.

Note

For research use only

Application notes

ANG antibody can be used for detection of ANG by Western blot at 1 - 2 µg/mL. For immunofluorescence start at 20 µg/mL. Antibody validated: Western Blot in rat samples and Immunofluorescence in human samples. All other applications and species not yet tested.

Isotype

IgG

Clonality

Polyclonal

MW

16 kDa

Uniprot ID

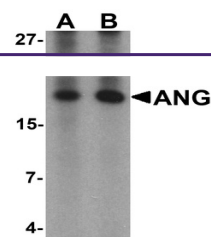
[P03950](#)

NCBI

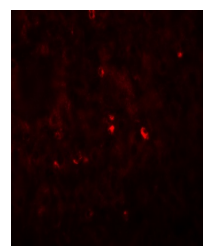
[NP_001136](#)

Dilution Range

ANG antibody can be used for detection of ANG by Western blot at 1 - 2 µg/mL. For immunofluorescence start at 20 µg/mL. Antibody validated: Western Blot in rat samples and Immunofluorescence in human samples. All other applications and species not yet tested.



Western blot analysis of ANG in rat live...



Immunofluorescence of ANG in human liver...