

## Product Datasheet

### KAL1 Antibody (orb1240245)

## Description

KAL1 Antibody

## Species/Host

Rabbit

## Reactivity

Human

## Conjugation

Unconjugated

## Tested

ELISA, ICC, IF, WB

## Applications

## Immunogen

Anosmin antibody was raised against an 18 amino acid synthetic peptide near the center of human Anosmin. The immunogen is located within amino acids 430 - 480 of Anosmin.

## Target

KAL1

## Preservatives

Anosmin Antibody is supplied in PBS containing 0.02% sodium azide.

## Form/Appearance

Liquid

## Concentration

1 mg/mL

## Storage

Anosmin antibody can be stored at 4 °C, stable for one year. As with all antibodies care should be taken to avoid repeated freeze thaw cycles. Antibodies should not be exposed to prolonged high temperatures.

## Note

For research use only

## Application notes

Anosmin antibody can be used for detection of Anosmin by Western blot at 1 µg/mL. Antibody can also be used for immunocytochemistry starting at 5 µg/mL. For immunofluorescence start at 20 µg/mL. Antibody validated: Western Blot in human samples; Immunocytochemistry in human samples and Immunofluorescence in human samples. All other applications and species not yet tested.

## Isotype

IgG

## Clonality

Polyclonal

## Uniprot ID

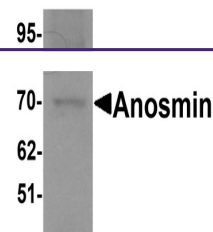
**P23352**

## NCBI

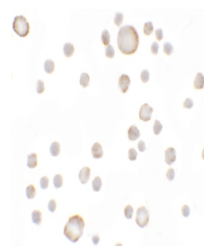
**NP\_000207**

## Dilution Range

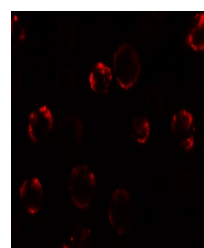
Anosmin antibody can be used for detection of Anosmin by Western blot at 1 µg/mL. Antibody can also be used for immunocytochemistry starting at 5 µg/mL. For immunofluorescence start at 20 µg/mL. Antibody validated: Western Blot in human samples; Immunocytochemistry in human samples



Western blot analysis of Anosmin in MCF7...



Immunocytochemistry of Anosmin in MCF7 C...



Immunofluorescence of Anosmin in MCF7 ce...