

Product Datasheet

AP2M1 Antibody (orb1240244)

Description

AP2M1 Antibody

Species/Host

Gallus

Reactivity

Human, Mouse, Rat

Conjugation

Unconjugated

Tested

ELISA, IF, IHC-P, WB

Applications

Immunogen

AP2M1 antibody was raised against a 16 amino acid synthetic peptide near the carboxy terminus of human AP2M1. The immunogen is located within amino acids 360 - 410 of AP2M1.

Target

AP2M1

Preservatives

AP2M1 Antibody is supplied in PBS containing 0.02% sodium azide.

Form/Appearance

Liquid

Concentration

1 mg/mL

Storage

AP2M1 antibody can be stored at 4°C for three months and -20°C, stable for up to one year. As with all antibodies care should be taken to avoid repeated freeze thaw cycles. Antibodies should not be exposed to prolonged high temperatures.

Note

For research use only

Application notes

AP2M1 antibody can be used for detection of AP2M1 by Western blot at 1 - 2 µg/mL. Antibody can also be used for immunohistochemistry starting at 2.5 µg/mL. For immunofluorescence start at 20 µg/mL. Antibody validated: Western Blot in human samples; Immunohistochemistry in mouse samples and Immunofluorescence in mouse samples. All other applications and species not yet tested.

Isotype

IgY

Clonality

Polyclonal

Uniprot ID

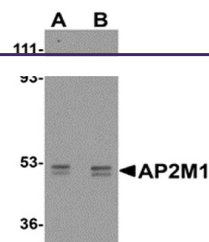
[Q96CW1](#)

NCBI

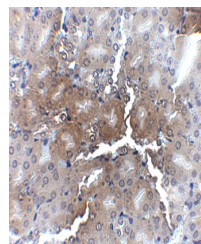
[NP_004059](#)

Dilution Range

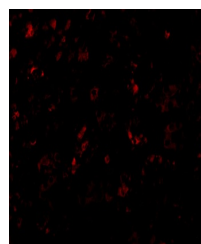
AP2M1 antibody can be used for detection of AP2M1 by Western blot at 1 - 2 µg/mL. Antibody can also be used for immunohistochemistry starting at 2.5 µg/mL. For immunofluorescence start at 20 µg/mL. Antibody validated: Western Blot in human samples; Immunohistochemistry in mouse samples



Western blot analysis of AP2M1 in human ...



Immunohistochemistry of AP2M1 in mouse k...



Immunofluorescence of AP2M1 in Mouse Kid...