

Product Datasheet

APPBP2 Antibody (orb1240213)

Description

APPBP2 Antibody

Species/Host

Rabbit

Reactivity

Human, Mouse, Rat

Conjugation

Unconjugated

Tested

ELISA, IF, IHC-P, WB

Applications

Immunogen

APPBP2 antibody was raised against an 18 amino acid peptide near the carboxy terminus of human APPBP2. The immunogen is located within the last 50 amino acids of APPBP2.

Target

APPBP2

Preservatives

APPBP2 antibody is supplied in PBS containing 0.02% sodium azide.

Form/Appearance

Liquid

Concentration

1 mg/mL

Storage

APPBP2 antibody can be stored at 4°C for three months and -20°C, stable for up to one year.

Note

For research use only

Application notes

APPBP2 antibody can be used for detection of APPBP2 by Western blot at 0.5 - 1 µg/ml. Antibody can also be used for Immunohistochemistry starting at 5 µg/mL. For immunofluorescence start at 20 µg/mL. Antibody validated: Western Blot in human samples; Immunohistochemistry in human samples and Immunofluorescence in human samples. All other applications and species not yet tested.

Isotype

IgG

Clonality

Polyclonal

MW

Predicted: 64 kDa Observed: 57 kDa

Uniprot ID

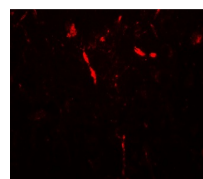
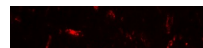
[Q92624](#)

NCBI

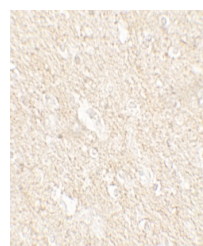
[NP_006371](#)

Dilution Range

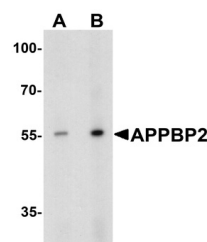
APPBP2 antibody can be used for detection of APPBP2 by Western blot at 0.5 - 1 µg/ml. Antibody can also be used for Immunohistochemistry starting at 5 µg/mL. For immunofluorescence start at 20 µg/mL. Antibody validated: Western Blot in human samples; Immunohistochemistry in human samples and Immunofluorescence in human samples. All other applications and species not yet tested.



Immunofluorescence of APPBP2 in human brain tissue.



Immunohistochemistry of APPBP2 in human brain tissue.



Western blot analysis of APPBP2 in human brain tissue.