

Product Datasheet

TLR3 Antibody (orb1240199)

Description

TLR3 Antibody

Species/Host

Rabbit

Reactivity

Human, Mouse

Conjugation

Unconjugated

Tested

ELISA, ICC, IF, IHC-P, WB

Applications

Immunogen

TLR3 antibody was raised against a peptide corresponding to 15 amino acids near the carboxy terminus of human TLR3. The immunogen is located within amino acids 780 - 830 of TLR3.

Target

TLR3

Preservatives

TLR3 Antibody is supplied in PBS containing 0.02% sodium azide.

Form/Appearance

Liquid

Concentration

1 mg/mL

Storage

TLR3 antibody can be stored at 4°C up to one year. Antibodies should not be exposed to prolonged high temperatures.

Note

For research use only

Application notes

TLR3 antibody can be used for detection of TLR3 by Western blot at 0.5 to 2 µg/mL. Antibody can also be used for immunocytochemistry starting at 1 µg/mL and immunohistochemistry starting at 2 µg/mL. For immunofluorescence start at 10 µg/mL. Antibody validated: Western Blot in human and mouse samples; Immunohistochemistry in human and mouse samples; Immunocytochemistry in mouse samples and Immunofluorescence in human and mouse samples. All other applications and species not yet tested.

Isotype

IgG

Clonality

Polyclonal

MW

Predicted: 99 kDa Observed: 105 kDa

Uniprot ID

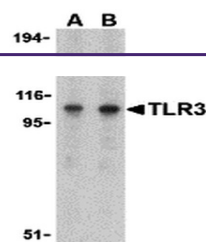
[O15455](#)

NCBI

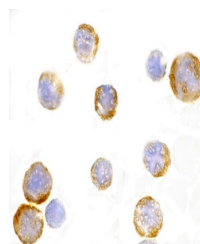
[O15455](#)

Dilution Range

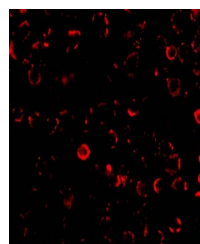
TLR3 antibody can be used for detection of TLR3 by Western blot at 0.5 to 2 µg/mL. Antibody can also be used for immunocytochemistry starting at 1 µg/mL and immunohistochemistry starting at 2 µg/mL. For



Western blot analysis of TLR3 in Daudi c...



Immunocytochemistry of TLR3 in EL4 cells...



Immunofluorescence of TLR3 in EL4 cells ...